



Product Catalog

Effective 04.01.2023



Atos Breathing-Speaking-Living

Atos Medical – Who we are

At Atos Medical, we are committed to giving a voice to people who breathe through a stoma with design solutions and technologies built on decades of experience and a deep understanding of our users.

Since the introduction of the first Provox® voice prosthesis in 1990, Atos Medical has become the world leader in laryngectomy care.

Our commitment and dedicated specialization in this field has allowed us to gain a deep understanding of the needs of our customers. This understanding drives our innovation process, and we take pride in continuously bringing innovative solutions to our users.

Our comprehensive laryngectomy care portfolio includes a complete range of voice and pulmonary rehabilitation devices. Our broad range of high-quality products allows for a personalized combination of solutions for each user.

Atos Medical understands that being the leader in this field is more than product development. Supporting clinical research and educating both professionals and users is an integral part of our business, and our products are featured in peer-reviewed publications. We support and conduct hundreds of conferences and educational programs every year along with events for laryngectomy patients and caregivers.

We are proud of our history and accomplishments, and we continue to learn from the people who use our products; serving them with the best products, services and education we can provide in laryngectomy care.



All products in this catalog may not be licensed in Canada. Please refer to atosmedical.ca for approved products.

Patents and Trademarks:

Atos and the Atos Medical logo are trademarks of Coloplast A/S.

Provox®, Provox® ActiValve®, Provox® FreeHands HME®, Provox® Luna®, Provox® XtraBase®, Provox® TruTone EMOTE®, Provox® TruTone Plus® and TheraBite® are registered trademarks owned by Atos Medical AB, Sweden.

Provox® Life™, Provox® Vega™, Provox® Vega™ XtraSeal™, Provox® NiD™, Provox® XtraMoist™ and XtraFlow™, Provox® Micron HME™, Provox® HME Cap™, Provox® XtraFlange™, Provox® ShowerAid™, Provox® LaryTube™, Provox® LaryButton™, Provox® LaryClip™, Provox® FlexiDerm™, Provox® OptiDerm™, Provox® FreeHands FlexiVoice™, Provox® FreeHands Support™, Provox® StabiliBase™, Provox® Adhesive Strip™, Provox® SolaTone Plus™, SecureFit™, TheraBite® Jaw Motion Rehabilitation System™ and Freevent™ are trademarks of Atos Medical AB, Sweden.

Servox® is a registered trademark owned by Servona GmbH. Tracho-Foam® is a registered trademark owned by Urocare. Kapi-Gel® is a registered trademark of Kapitex Healthcare Ltd. VELCRO® is a registered trademark owned by Velcro IP Holdings LLC. Barton-Mayo™ is a trademark of Medical Innovations International, Inc. SkinTac™ is a trademark of Torbot Group Inc.

For information about patents, please refer to www.atosmedical.com.

In this catalog you will find products that will help you to speak, breathe well and take care of your skin.

Contents

- 4. Speaking
- 15. Breathing - Provox® Life™
- 24. Hands-free
- 28. Care
- 32. Breathing - Provox®
- 41. Supplemental Products
- 46. Hospital to Home
- 49. Jaw Mobility
- 52. Laryngectomy Anatomy Illustrations
- 53. Selection of References
- 54. Contact Information
- 55. Ordering Information

Speaking





Provox® Vega™

A voice prosthesis designed for voice quality, low speaking effort, easy device maintenance and comfort.

Consistency, device life, voice quality and ease of voicing are important factors when choosing the right voice prosthesis. Clinical studies show that the Provox Vega has superior device life, provides the best voice quality (as it requires the lowest amount of effort to speak) and is the easiest to clean.*

- Better voice quality
- Less effort to speak
- Easy to clean and maintain



The Provox Vega voice prosthesis comes with an Insertion System that can provide more control and greater flexibility.

- Adapts to patient anatomy and clinician's preferred insertion method
- Creates an ideal fold of the esophageal flange
- Intuitive and easy-to-use



Product	Rx	Size	REF#	Product	Rx	Size	REF#	Product	Rx	Size	REF#
Provox Vega 17Fr	Rx	4mm	8270	Provox Vega 20Fr	Rx	4mm	8276	Provox Vega 22.5Fr	Rx	4mm	8282
Provox Vega 17Fr	Rx	6mm	8271	Provox Vega 20Fr	Rx	6mm	8277	Provox Vega 22.5Fr	Rx	6mm	8283
Provox Vega 17Fr	Rx	8mm	8272	Provox Vega 20Fr	Rx	8mm	8278	Provox Vega 22.5Fr	Rx	8mm	8284
Provox Vega 17Fr	Rx	10mm	8273	Provox Vega 20Fr	Rx	10mm	8279	Provox Vega 22.5Fr	Rx	10mm	8285
Provox Vega 17Fr	Rx	12.5mm	8274	Provox Vega 20Fr	Rx	12.5mm	8280	Provox Vega 22.5Fr	Rx	12.5mm	8286
Provox Vega 17Fr	Rx	15mm	8275	Provox Vega 20Fr	Rx	15mm	8281	Provox Vega 22.5Fr	Rx	15mm	8287

For single use.

Includes: 1 Provox Vega voice prosthesis with Insertion System (sterile) and 1 Provox Brush (non-sterile).

For Clinician Insertion Only.

Provox® Capsule and Provox® TwistLock

Designed to be used with the Provox Vega Insertion System.

Provox Capsule is a single-use accessory for antegrade insertion of a standard voice prosthesis by a clinician into the tracheoesophageal puncture. Provox TwistLock makes folding the esophageal flange of the prosthesis into the Provox Capsule simple.

Contact your Atos Territory Sales Manager for Provox TwistLock details.

Product	Qty	Rx	REF#
Provox Capsule 17Fr	15 pcs	Rx	7795
Provox Capsule 20Fr	15 pcs	Rx	7796
Provox Capsule 22.5Fr	15 pcs	Rx	7797

Non-sterile, for single use. For use with Provox Vega only.

For Clinician Use Only.



*Data on file



Provox® Vega™ XtraSeal™

Combines the benefits of the Provox Vega with a solution to manage leakage around the voice prosthesis.*

- The enlarged esophageal flange is thin, concave and very flexible so it conforms to the tissue around the TE puncture
- The patient can continue to speak, eat and drink while the leakage around is managed



The Provox Vega XtraSeal voice prosthesis comes with an Insertion System that can provide more control and greater flexibility.

- Adapts to patient anatomy and clinician's preferred insertion method**
- Creates an ideal fold of the esophageal flange
- Intuitive and easy-to-use



Product	Rx	Size	REF#	Product	Rx	Size	REF#	Product	Rx	Size	REF#
Provox Vega XtraSeal 17Fr	Rx	4mm	8288	Provox Vega XtraSeal 20Fr	Rx	4mm	8294	Provox Vega XtraSeal 22.5Fr	Rx	4mm	8300
Provox Vega XtraSeal 17Fr	Rx	6mm	8289	Provox Vega XtraSeal 20Fr	Rx	6mm	8295	Provox Vega XtraSeal 22.5Fr	Rx	6mm	8301
Provox Vega XtraSeal 17Fr	Rx	8mm	8290	Provox Vega XtraSeal 20Fr	Rx	8mm	8296	Provox Vega XtraSeal 22.5Fr	Rx	8mm	8302
Provox Vega XtraSeal 17Fr	Rx	10mm	8291	Provox Vega XtraSeal 20Fr	Rx	10mm	8297	Provox Vega XtraSeal 22.5Fr	Rx	10mm	8303
Provox Vega XtraSeal 17Fr	Rx	12.5mm	8292	Provox Vega XtraSeal 20Fr	Rx	12.5mm	8298	Provox Vega XtraSeal 22.5Fr	Rx	12.5mm	8304
Provox Vega XtraSeal 17Fr	Rx	15mm	8293	Provox Vega XtraSeal 20Fr	Rx	15mm	8299	Provox Vega XtraSeal 22.5Fr	Rx	15mm	8305

For single use.

Includes: 1 Provox Vega XtraSeal voice prosthesis with Insertion System (sterile) and 1 Provox Brush (non-sterile).

Note: When determining the appropriate size of the XtraSeal for the patient, it is critical to consider the shaft of the Provox XtraSeal is approximately 1mm shorter than the size indicated due to the enlarged esophageal flange. Please contact your Atos Territory Sales Manager to discuss sizing considerations.

*Data on file

**Capsule insertion method cannot be used with Provox Vega XtraSeal.

For Clinician Insertion Only.



Provox® ActiValve®

The voice prosthesis for people who consistently experience early leakage through with other voice prostheses.



- Clinically proven for device longevity*
- Reduces the need for frequent replacements in most patients who experience short device life*
- Valve and valve-seat consist of fluoroplastic which appears to be insusceptible to destruction by Candida*
- Valve closes with magnets which prevents inadvertent valve opening when the patient breathes or swallows
- Available in three strengths – Light, Strong and XtraStrong

Product	Rx	Size	REF#	Product	Rx	Size	REF#	Product	Rx	Size	REF#
Provox ActiValve Light 22.5Fr	Rx	4.5mm	7150	Provox ActiValve Strong 22.5Fr	Rx	4.5mm	7160	Provox ActiValve XtraStrong 22.5Fr	Rx	4.5mm	7165
Provox ActiValve Light 22.5Fr	Rx	6mm	7151	Provox ActiValve Strong 22.5Fr	Rx	6mm	7161	Provox ActiValve XtraStrong 22.5Fr	Rx	6mm	7166
Provox ActiValve Light 22.5Fr	Rx	8mm	7152	Provox ActiValve Strong 22.5Fr	Rx	8mm	7162	Provox ActiValve XtraStrong 22.5Fr	Rx	8mm	7167
Provox ActiValve Light 22.5Fr	Rx	10mm	7153	Provox ActiValve Strong 22.5Fr	Rx	10mm	7163	Provox ActiValve XtraStrong 22.5Fr	Rx	10mm	7168
Provox ActiValve Light 22.5Fr	Rx	12.5mm	7154	Provox ActiValve Strong 22.5Fr	Rx	12.5mm	7164	Provox ActiValve XtraStrong 22.5Fr	Rx	12.5mm	7169
								Provox ActiValve Lubricant (replacement)			7149

Non-sterile, for single use.

Includes: 1 Provox ActiValve voice prosthesis with 1 single-use insertion tool (sterile), 2 Provox Brush (non-sterile), 1 Provox ActiValve Lubricant (non-sterile), 1 Provox Plug (non-sterile), 2 User Cards, 1 Emergency Card.

Caution: Provox ActiValve contains magnets that may cause serious harm if kept in situ during MRI or radiation therapy.

For Clinician Insertion Only.

*Data on file

Provox®2

Robust and reliable Provox voice prosthesis.



- Pre-tensioned valve flap adds resistance to prevent inadvertent opening
- Low airflow resistance
- Easy maintenance

Provox2	Rx	Size	REF#	Provox2	Rx	Size	REF#
Provox2 22.5Fr	Rx	4.5mm	7216	Provox2 22.5Fr	Rx	10mm	7219
Provox2 22.5Fr	Rx	6mm	7217	Provox2 22.5Fr	Rx	12.5mm	7221
Provox2 22.5Fr	Rx	8mm	7218	Provox2 22.5Fr	Rx	15mm	7224

For single use.

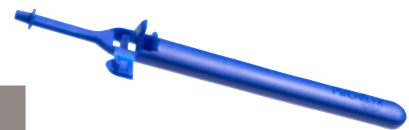
Includes: 1 Provox2 voice prosthesis (sterile) with 1 insertion tool (sterile), 1 Provox Brush (non-sterile).

For Clinician Insertion Only.

Provox® NiD™ Non-Indwelling

Patient-changeable voice prosthesis with proven Provox features and quality.

- With clinician guidance, patients may learn to insert, remove and clean the NiD prosthesis themselves
- Longer device life compared to other non-indwelling voice prostheses*
- Attached to a wide safety medallion to prevent it from falling into the airway*
- Low airflow resistance
- Using dedicated cleaning tools (Provox Brush and Provox Flush) the prosthesis may be cleaned while inside puncture or it may be removed for cleaning
- Easy to visualize and maintain



Product	Rx	Size	REF#
Provox NiD 17	Rx	6mm	7101
Provox NiD 17	Rx	8mm	7102
Provox NiD 17	Rx	10mm	7103
Provox NiD 17	Rx	12mm	7104
Provox NiD 17	Rx	14mm	7105
Provox NiD 17	Rx	18mm	7106

Product	Rx	Size	REF#
Provox NiD 20	Rx	6mm	7111
Provox NiD 20	Rx	8mm	7112
Provox NiD 20	Rx	10mm	7113
Provox NiD 20	Rx	12mm	7114
Provox NiD 20	Rx	14mm	7115
Provox NiD 20	Rx	18mm	7116

Non-sterile, for single patient use.

Includes: Inserter of corresponding size.

Provox® Dilator for Provox® NiD

Used to stretch the diameter of the puncture prior to insertion of NiD or to temporarily stent the TE puncture.

- For home care use as directed by clinician

Product	Rx	Qty	REF#
Provox Dilator 17Fr	Rx	1 pc	7122
Provox Dilator 20Fr	Rx	1 pc	7123

Non-sterile, reusable, sterilizable.

17Fr diameter is 11.5Fr at tip and increases to 19Fr.

20Fr diameter is 13Fr at tip and increases to 22Fr.



Provox® Dilator

For upsizing the diameter of the puncture or to keep the puncture open.

- Can be used irrespective of type and diameter of voice prosthesis used
- The size can be gradually increased from 15Fr to 24Fr with one device
- Each ring indicates moving up in diameter (approximately 18, 20, 22, 24Fr)
- Small rings allow the Provox Dilator to stay in place and reduces the tendency for it to slide out

Product	Qty	REF#
Provox Dilator	1 pc	7211

Non-sterile, reusable, sterilizable.
Provox Dilator for dilating 15-24Fr.

For Clinician Use Only.



Provox® Brush

For daily cleaning of the voice prosthesis.

- Easy and efficient cleaning
- Handle can be bent for individual adaptation
- Works for all diameters of Provox voice prostheses
- Available in two different brush-head sizes, standard or XL, to correspond with the length of the voice prosthesis
- Available in two handle length options, Standard or Long, for ease of use – user's choice
- The non-bristled end of the Brush can be used to place the Provox Plug and/or the Provox Vega Plug

Product	Qty	VP size	REF#
Provox Brush	6 pcs	4-10mm	7204
Provox Brush XL	6 pcs	12-18mm	7225
Provox Brush Long	6 pcs	4-10mm	8404
Provox Brush Long XL	6 pcs	12-18mm	8425

Non-sterile, reusable, for single patient use.



Provox® Flush

For flushing after brushing the voice prosthesis.

- Can be used with air or drinking water
- Can be bent for individual fitting
- Regular use of Flush to clean voice prosthesis may help prolong device life

Product	Qty	REF#
Provox Flush	1 pc	8109

Non-sterile, reusable, for single patient use.



Provox® Plug and Provox® Vega™ Plug

A temporary solution to stop leakage through the voice prosthesis.

- Allows continued eating and drinking while waiting for voice prosthesis replacement due to leaking through the center of the device
- Can be inserted with the non-bristled end of Provox Brush
- Speaking is not possible with a Plug in place

Product	Qty	REF#	Product	Qty	REF#
Provox Vega Plug 17Fr	1 pc	8119	Provox Plug	1 pc	7205
Provox Vega Plug 20Fr	1 pc	8129			
Provox Vega Plug 22.5Fr	1 pc	8139			

Non-sterile, reusable, for single patient use.
Includes: 1 Provox Brush (non-sterile)

Note: The Provox Vega Plug fits into Provox Vega and Provox XtraSeal prostheses. The Provox Plug is for Provox2 and Provox ActiValve.



Provox® XtraFlange™

A rapid solution to manage leakage around the voice prosthesis.

- Easy, quick, cost-effective solution to manage leakage around
- Can be used in combination with all Provox indwelling voice prostheses
- Placed between the tracheal flange of the voice prosthesis and the tracheal mucosa
- White material for good visibility

Product	Rx	Qty	REF#
Provox XtraFlange 17Fr	Rx	1 pc	7277
Provox XtraFlange 20Fr	Rx	1 pc	7276
Provox XtraFlange 22.5Fr	Rx	1 pc	7275

Sterile, for single use.

For Clinician Application Only.



Provox® GuideWire

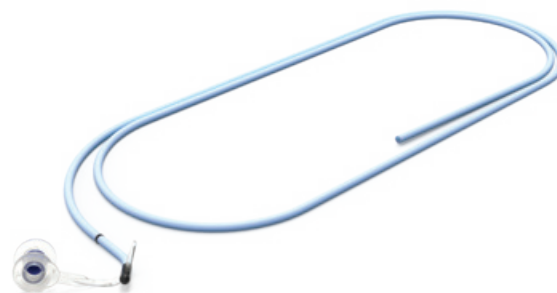
Enables retrograde insertion of all Provox indwelling prostheses.

- Tip contains a retainer slit that holds the safety strap of the prosthesis

Product	Qty	REF#
Provox GuideWire	1 pc	7215

Sterile, for single use.

For Clinician Use Only.



Provox® Vega™ Puncture Set

A disposable surgical set for primary and secondary placement of the Provox Vega voice prosthesis.

- Sterile, all-in-one and disposable surgical set
- Creates a round puncture
- Pre-loaded with a Provox Vega voice prosthesis
- Rapid procedure with minimal preparation
- Designed to protect the pharynx during primary puncture
- Simultaneously creates and dilates the TE puncture while placing the Provox Vega voice prosthesis



Product	Size	REF#
Provox Vega Puncture Set 17Fr	8mm	8140US
Provox Vega Puncture Set 17Fr	10mm	8141US
Provox Vega Puncture Set 17Fr	12.5mm	8142US
Provox Vega Puncture Set 17Fr	15mm	8143US
Provox Vega Puncture Set 20Fr	8mm	8144US

Product	Size	REF#
Provox Vega Puncture Set 20Fr	10mm	8145US
Provox Vega Puncture Set 20Fr	12.5mm	8146US
Provox Vega Puncture Set 22.5Fr	8mm	8147US
Provox Vega Puncture Set 22.5Fr	10mm	8148US
Provox Vega Puncture Set 22.5Fr	12.5mm	8149US

Sterile, for single use.

Set Includes: 1 Pharynx Protector (made of transparent thermoplastic), 1 Puncture Needle (made of surgical stainless steel), 1 Guidewire (made of pre-colored fluoroplastic), 1 Puncture Dilator with 1 preloaded Provox Vega voice prosthesis.

Also included: 1 Provox Vega Plug (non-sterile), 1 Provox Brush (non-sterile) and 1 Emergency Card.



For Clinician Use Only.

Provox® Measure

A tool that can be used to approximate the length of TE punctures.

- For 20Fr and 22.5Fr punctures only

Product	Qty	REF#
Provox Measure	1 pc	7270
Provox Measure Flanges	5 pcs	7271

Provox Measure: Non-sterile, reusable, sterilizable. Includes: 5 pcs Provox Measure Flanges.

Provox Measure Flanges: Non-sterile, for single use.

For Clinician Use Only.





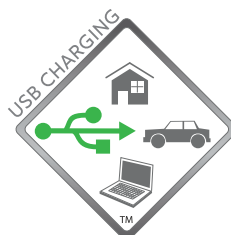
Provox® TruTone EMOTE® Electrolarynx

Our most advanced, premium-quality speech aid for more natural expression.

- Six easy-set modes for monotone or variable pitch selections
- Single, pressure-sensitive Emotion Button for natural expression
- Masculine or feminine voicing options with pitch adjustment
- Unique Whisper Mode allows smooth transition between normal and softer volumes with one-touch ease
- Ergonomic hourglass design for better grip and comfort
- Lightweight and extremely durable
- USB port for convenient, in-unit battery charging
- Smart indicator light shows low battery and full charge
- Rechargeable lithium battery offers long battery life-up to 30 days

Product	REF#
Provox TruTone EMOTE Electrolarynx	7439

Includes: Provox TruTone EMOTE Electrolarynx, Micro-USB Charging Cord, Rechargeable Battery, Lanyard, Oral Adapter, Oral Tubes and Extra-Sharp Head Cap



Provox® TruTone Plus® Electrolarynx

High-quality speech aid for natural expression with a wide range of frequencies for voicing.

- Two easy-set modes for monotone and variable pitch, no tools required
- Single, pressure-sensitive Emotion Button for natural expression
- Masculine or feminine voicing options with pitch adjustment
- Ergonomic hourglass design for better grip and comfort
- Lightweight and extremely durable
- USB port for convenient, in-unit battery charging
- Smart indicator light shows low battery and full charge
- Rechargeable lithium battery offers long battery life-up to 14 days

Product	REF#
Provox TruTone Plus Electrolarynx	7444

Includes: Provox TruTone Plus Electrolarynx, Micro-USB Charging Cord, Rechargeable Battery, Lanyard, Oral Adapter, Oral Tubes and Extra-Sharp Head Cap

Not available in Canada.





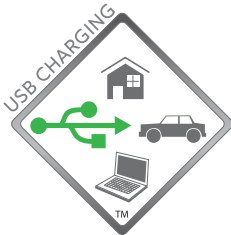
Provox® SolaTone Plus™ Electrolarynx

Easy-to-use, single-tone, button-activated speech aid with a wide frequency range of voicing.

- Quality, monotone sound with adjustable pitch
- Masculine or feminine tone options
- Lightweight and durable
- Rechargeable, long-lasting AA batteries
- USB port for convenient, in-unit battery charging

Product	REF#
Provox SolaTone Plus Electrolarynx	7438

Includes: SolaTone Plus Electrolarynx, Micro-USB Charging Cord, Rechargeable AA Batteries, Lanyard, Oral Adapter and Oral Tubes



Oral Adapter and Oral Tubes

For use with all Provox electrolarynx devices.

Product	Qty	REF#
Oral Adapter	1 pc	50445
White and Clear Tubes	4 pcs	S50450

Non-sterile, reusable, for single patient use.



Foam Rings

Replacement rings to help resolve issues with muffled sound.

- For use with all Provox electrolarynx devices
- Replaces worn or damaged foam ring

Product	Qty	REF#
Foam Rings	5	S50305-5

Includes: 5 Foam Rings and Install Card.



Spare Parts Kits

Replacements parts to help extend the life of your Provox electrolarynx.

Product	REF#
Provox TruTone EMOTE Electrolarynx Spare Parts Kit	KX7439
Provox TruTone Plus Electrolarynx Spare Parts Kit	KX7444
Provox SolaTone Plus Electrolarynx Spare Parts Kit	KX7438

TruTone EMOTE and TruTone Plus kits include: Sound Head Assembly, Battery Cap, Rubber Diaphragm, Foam Rings (4 pcs), Extra Sharp Sound Button and Spacer Rings (3 pcs)

SolaTone Plus kit includes: Sound Head Assembly, Battery Cap, Rubber Diaphragm and Foam Rings (4 pcs)



Replacement Batteries

Replacement batteries for Provox TruTone EMOTE and Provox TruTone Plus.

Product	REF#
Lithium Battery (For Provox TruTone EMOTE or new Provox TruTone Plus)	S50444
Rechargeable 9V High-Capacity Battery (For original TruTone Plus)	S50439



Breathing — Provox[®] Life[™]



Provox[®] Life[™] Home HME

An everyday heat and moisture exchanger (HME) designed to improve your lung health when you are taking it easy.

- Provides high humidification with comfortable breathability
- Discreet look for everyday use
- Reduces mucus production and coughing*
- Easy occlusion of the stoma for voicing with voice prosthesis
- Compatible with all Provox Life adhesives, Provox Life LaryTube and Provox Life LaryButton

Product	Qty	REF#
Provox Life Home HME	30 pcs	8311

Non-sterile, for single use.

Not compatible with Provox[®] attachments.



Provox[®] Life[™] Go HME

An everyday HME designed to make it easy to breathe when engaging in daily activities.

- Provides humidification with low breathing resistance
- Low-profile and discreet look for everyday use
- Reduces mucus production and coughing*
- Easy occlusion of the stoma for voicing with voice prosthesis
- Compatible with all Provox Life adhesives, Provox Life LaryTube and Provox Life LaryButton

Product	Qty	REF#
Provox Life Go HME	30 pcs	8310

Non-sterile, for single use.

Not compatible with Provox[®] attachments.



Provox[®] Life[™] Night HME

A nighttime HME designed to reduce coughing and mucus production for more restful nights.

- Highest humidification compared to other Provox Life HMEs**
- Soft and flexible for nighttime comfort
- Side openings to prevent occlusion while sleeping and, if needed, allow for manual occlusion to speak (not designed for daytime speech)
- Comfortable breathability for nighttime breathing
- Compatible with all Provox Life adhesives, Provox Life LaryTube and Provox Life LaryButton

Product	Qty	REF#
Provox Life Night HME	30 pcs	8262

Non-sterile, for single use.

Not compatible with Provox[®] attachments



*Data on file

**According to device specifications

Provox[®] Life[™] Energy HME

An HME that provides good humidification and low breathing resistance when you are physically active.

- High breathability with good humidification
- Openings in the top help prevent accidental occlusion when breathing heavily
- Reduces mucus production and coughing*
- Sporty appearance
- Compatible with all Provox Life adhesives, Provox Life LaryTube and Provox Life LaryButton



Product	Qty	REF#
Provox Life Energy HME	30 pcs	8312

Non-sterile, for single use.

Not compatible with Provox[®] attachments.



Provox[®] Life[™] Protect HME

Protect is not only an HME but also a highly effective bacteria, virus, dust and pollen filter (HMEF).

- Helps protect you from airborne particles (such as viruses, bacteria, dust and pollen) by effective filtration upon inspiration**
- Helps protect those around you from airborne particles (such as viruses and bacteria) by effective filtration upon expiration**
- An HMEF with comfortable breathing resistance
- Reduces mucus production and coughing*
- Filtration of bacteria: >98%*
- Filtration of viruses: >98%*
- Compatible with all Provox Life adhesives, Provox Life LaryTube and Provox Life LaryButton



Product	Qty	REF#
Provox Life Protect HME	15 pcs	8313

Non-sterile, for single use.

Not compatible with Provox[®] attachments.



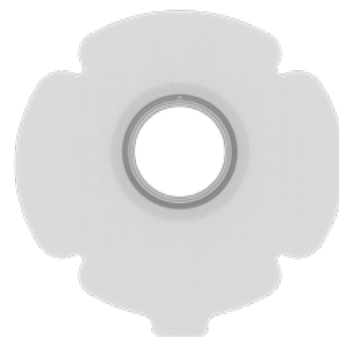
* The VFE (Viral Filtration Efficiency) and BFE (Bacterial Filtration Efficiency) at an increased Challenge Level Test procedure adapted from ASTM F2101, was performed for Provox[®] Life[™] Protect HME at Nelson Laboratories (US) in accordance with USFDA (21 CFR Parts 58, 210, 211 and 820) regulations. Mean VFE and BFE was >98%. Data on file.

** **Please note:** Since pathogens can enter and leave the human body in other ways (such as the mouth, nose, and eyes) Provox[®] Life[™] Protect HME can never guarantee complete protection. Provox[®] Life[™] Protect HME filtration capacity may vary depending on the size, shape and speed of airborne particles.

Provox[®] Life[™] Standard Adhesive

An everyday adhesive that provides a strong seal around your stoma.

- Soft, flexible with a low-profile and strong seal
- Clover-shaped adhesive for easy application and better fit
- Coupling with SecureFit[™] technology gives a click to confirm the HME is securely in place
- Compatible with all Provox Life HMEs



Product	Qty	REF#
Provox Life Standard Adhesive Round	30 pcs	7460
Provox Life Standard Adhesive Oval	30 pcs	7461
Provox Life Standard Adhesive Plus	30 pcs	7462

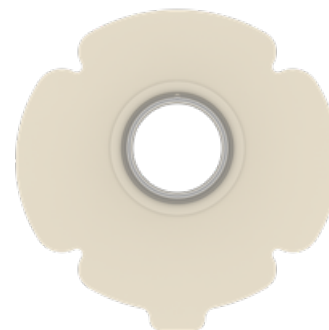
Non-sterile, for single use.
Not compatible with Provox[®] HMEs.



Provox[®] Life[™] Sensitive Adhesive

A gentle everyday adhesive for sensitive skin.

- Soft and gentle with low-profile and a good seal
- Hypoallergenic for sensitive skin
- Made from hydrocolloid material
- Clover-shaped adhesive for easy application and better fit
- Coupling with SecureFit[™] technology gives a click to confirm the HME is securely in place
- Compatible with all Provox Life HMEs



Product	Qty	REF#
Provox Life Sensitive Adhesive Round	30 pcs	7463
Provox Life Sensitive Adhesive Oval	30 pcs	7464
Provox Life Sensitive Adhesive Plus	30 pcs	7466

Non-sterile, for single use.
Not compatible with Provox[®] HMEs.



Compare shape options to get a good seal:

Round, Oval and Plus
(Standard and Sensitive Only)

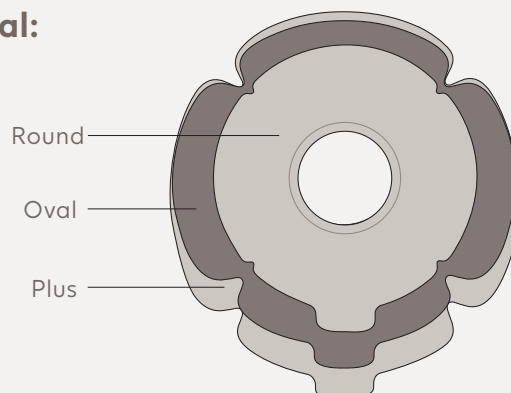
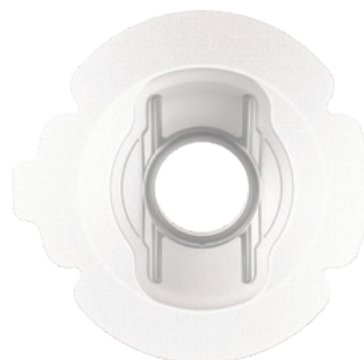


Illustration is to scale but is not actual size.
Color for illustration purposes only.

Provox[®] Life[™] Stability Adhesive

A firm, everyday adhesive with stabilizing bars that provide additional support for deep stomas.

- Ideal for those who speak frequently or speak hands-free
- Provides a strong seal
- Clover-shaped adhesive for easy application and better fit
- Coupling with SecureFit[™] technology gives a click to confirm the HME is securely in place
- Compatible with all Provox Life HMEs



Product	Qty	REF#
Provox Life Stability Adhesive	15 pcs	8263

Non-sterile, for single use.
Not compatible with Provox[®] HMEs.



Provox[®] Life[™] Night Adhesive

Night adhesive allows your skin to rest while you sleep.

- Made of skin-friendly hydrogel to soothe and cool the skin
- Soft and smooth for comfort
- Clover-shaped adhesive for easy application and better fit
- Coupling with SecureFit[™] technology gives a click to confirm the HME is securely in place
- Compatible with all Provox Life HMEs



Product	Qty	REF#
Provox Life Night Adhesive	15 pcs	8261

Non-sterile, for single use.
Not compatible with Provox[®] HMEs.



Note: Do not use skin barrier, wipe, cream, alcohol or any other skin prep prior to applying Provox Life Night Adhesive.

Provox[®] Life[™] LaryTube[™]

Soft, silicone tubes for maintaining the opening of the tracheostoma while supporting pulmonary rehabilitation with the use of a Provox Life HME.

ID = inner diameter
OD = outer diameter
L = length
(all in mm)

- Compatible with all Provox Life HMEs
- Available in Standard, Standard with Ring, Fenestrated and Fenestrated with Ring
- Standard and Fenestrated tubes can be secured with Provox TubeHolder, Provox LaryClip or Freevent Neckband, while LaryTube with Ring is designed to be secured with a Provox Life adhesive

Provox[®] Life[™] LaryTube[™] Standard

Use with or without voice prosthesis.

Product	Rx	ID	OD	L	REF#	Product	Rx	ID	OD	L	REF#
Provox Life LaryTube Standard, 8/27	Rx	9.5	12.0	27	7409	Provox Life LaryTube Standard, 10/27	Rx	12.0	15.0	27	7415
Provox Life LaryTube Standard, 8/36	Rx	9.5	12.0	36	7410	Provox Life LaryTube Standard, 10/36	Rx	12.0	15.0	36	7416
Provox Life LaryTube Standard, 8/55	Rx	9.5	12.0	55	7411	Provox Life LaryTube Standard, 10/55	Rx	12.0	15.0	55	7417
Provox Life LaryTube Standard, 9/27	Rx	10.5	13.5	27	7412	Provox Life LaryTube Standard, 12/27	Rx	13.5	17.0	27	7418
Provox Life LaryTube Standard, 9/36	Rx	10.5	13.5	36	7413	Provox Life LaryTube Standard, 12/36	Rx	13.5	17.0	36	7419
Provox Life LaryTube Standard, 9/55	Rx	10.5	13.5	55	7414	Provox Life LaryTube Standard, 12/55	Rx	13.5	17.0	55	7420

Non-sterile, reusable, for single patient use. Clinician may custom fenestrate for use with voice prosthesis.
Not compatible with Provox[®] HMEs.



Provox[®] Life[™] LaryTube[™] with Ring

Use with or without voice prosthesis.

Product	Rx	ID	OD	L	REF#	Product	Rx	ID	OD	L	REF#
Provox Life LaryTube With Ring, 8/36	Rx	9.5	12.0	36	7421	Provox Life LaryTube With Ring, 10/36	Rx	12.0	15.0	36	7425
Provox Life LaryTube With Ring, 8/55	Rx	9.5	12.0	55	7422	Provox Life LaryTube With Ring, 10/55	Rx	12.0	15.0	55	7426
Provox Life LaryTube With Ring, 9/36	Rx	10.5	13.5	36	7423	Provox Life LaryTube With Ring, 12/36	Rx	13.5	17.0	36	7427
Provox Life LaryTube With Ring, 9/55	Rx	10.5	13.5	55	7424	Provox Life LaryTube With Ring, 12/55	Rx	13.5	17.0	55	7428

Non-sterile, reusable, for single patient use. Clinician may custom fenestrate for use with voice prosthesis.
Not compatible with Provox[®] HMEs.



Provox® Life™ LaryTube™ Fenestrated

Fenestrations allow airflow through to the voice prosthesis.

Product	Rx	ID	OD	L	REF#	Product	Rx	ID	OD	L	REF#
Provox Life LaryTube Fenestrated, 8/36	Rx	9.5	12.0	36	7429	Provox Life LaryTube Fenestrated, 10/36	Rx	12.0	15.0	36	7433
Provox Life LaryTube Fenestrated, 8/55	Rx	9.5	12.0	55	7430	Provox Life LaryTube Fenestrated, 10/55	Rx	12.0	15.0	55	7434
Provox Life LaryTube Fenestrated, 9/36	Rx	10.5	13.5	36	7431	Provox Life LaryTube Fenestrated, 12/36	Rx	13.5	17.0	36	7435
Provox Life LaryTube Fenestrated, 9/55	Rx	10.5	13.5	55	7432	Provox Life LaryTube Fenestrated, 12/55	Rx	13.5	17.0	55	7436

Non-sterile, reusable, for single patient use.
Not compatible with Provox® HMEs.



Provox® Life™ LaryTube™ Fenestrated with Ring

Use with voice prosthesis and a Provox Life adhesive.

Product	Rx	ID	OD	L	REF#	Product	Rx	ID	OD	L	REF#
Provox Life LaryTube Fenestrated with Ring, 8/36	Rx	9.5	12.0	36	8048	Provox Life LaryTube Fenestrated with Ring, 10/36	Rx	12.0	15.0	36	8052
Provox Life LaryTube Fenestrated with Ring, 8/55	Rx	9.5	12.0	55	8049	Provox Life LaryTube Fenestrated with Ring, 10/55	Rx	12.0	15.0	55	8053
Provox Life LaryTube Fenestrated with Ring, 9/36	Rx	10.5	13.5	36	8050	Provox Life LaryTube Fenestrated with Ring, 12/36	Rx	13.5	17.0	36	8054
Provox Life LaryTube Fenestrated with Ring, 9/55	Rx	10.5	13.5	55	8051	Provox Life LaryTube Fenestrated with Ring, 12/55	Rx	13.5	17.0	55	8055

Non-sterile, reusable, for single patient use.
Not compatible with Provox® HMEs.



Provox® Life™ LaryButton™

For maintaining the opening of the tracheostoma while supporting pulmonary rehabilitation with the use of a Provox Life HME.

- Soft, silicone buttons may be secured with Provox LaryClip, Provox TubeHolder or Freevent Neckband
- Compatible with all Provox Life HMEs

Product	Rx	OD	L	REF#	Product	Rx	OD	L	REF#
Provox Life LaryButton, 12/8	Rx	12	8	8040	Provox Life LaryButton, 16/8	Rx	16	8	8044
Provox Life LaryButton, 12/18	Rx	12	18	8041	Provox Life LaryButton, 16/18	Rx	16	18	8045
Provox Life LaryButton, 14/8	Rx	14	8	8042	Provox Life LaryButton, 18/8	Rx	18	8	8046
Provox Life LaryButton, 14/18	Rx	14	18	8043	Provox Life LaryButton, 18/18	Rx	18	18	8047

Non-sterile, reusable, for single patient use.
Not compatible with Provox® HMEs.



Provox® TubeHolder

Designed exclusively for use with Provox and Provox Life LaryTube and LaryButton to help with retention.

- Integrated clip connectors allow for optimal fit with less stress on the wings of the LaryTube or LaryButton
- Also well-suited for those who have sensitive skin around the tracheostoma and cannot tolerate an adhesive

Product	Qty	REF#
Provox TubeHolder	1 pc	7668

Non-sterile, for single use.



Provox® LaryClip™

An alternative to Provox TubeHolder.

- A two-piece system designed to discreetly attach Provox and Provox Life LaryTube and LaryButton to help with retention

Product	Qty	REF#
Provox LaryClip	1 set	7669

Non-sterile, for single patient use.

Set includes: 8 LaryClip, 40 LaryClip adhesive base.



Freevent™ Neckband

High-quality neckband for secure tube positioning.

- Two-piece design with VELCRO® brand fastening
- Made of soft foam with rounded edges to maximize comfort
- Attach to the wings of Provox and Provox Life LaryTube and LaryButton with VELCRO® fasteners

Product	Qty	REF#
Freevent Neckband, White	10 pcs	1662

Non-sterile, for single patient use.



Provox[®] TubeBrush

Used to clean Provox and Provox Life LaryTube and LaryButton.

- Soft bristles, cotton tip and ergonomic handle designed for comfort
- Looped handle allows brush to be easily hung on a hook for drying

Product	Qty	Size*	REF#
Provox TubeBrush	6 pcs	8mm	7660
Provox TubeBrush	6 pcs	12mm	7661

Non-sterile, reusable, for single patient use.

* 8mm TubeBrush for use with LaryTube sizes 8 and 9,
12mm TubeBrush for use with LaryTube sizes 10 and 12



Provox[®] Life[™] BasePlate Adaptor

Makes it possible to attach a 15mm connector to a Provox Life attachment.

- Designed for use with a Provox Life attachment only (e.g. a Provox Life adhesive, Provox Life LaryTube or Provox Life LaryButton) to attach a device with an ISO 15mm standard connector

Product	Qty	REF#
Provox Life BasePlate Adaptor	1 pc	8057

Non-sterile, reusable, for single patient use.
Not compatible with Provox attachments.



Hands-free





Provox® FreeHands FlexiVoice™

Gives voice prosthesis users the freedom to speak hands-free.

More than 90% of the participants in a clinical study were able to speak hands-free with Provox FreeHands FlexiVoice. About half of the users used it every day.*

- Available in four membranes: Light, Medium, Strong and XtraStrong
- Allows the flexibility for voice prosthesis users to speak hands-free or with finger occlusion when necessary
- Use different membranes for different situations
- Can lock during physical activity so membrane remains open
- Provox FreeHands FlexiVoice is meant to be used with either Provox or Provox Life FreeHands HMEs.

Product	Rx	REF#
Provox FreeHands FlexiVoice Light: 1 Light Membrane, 1 Arch, 1 Removal Aid	Rx	8161
Provox FreeHands FlexiVoice Medium: 1 Medium Membrane, 1 Arch, 1 Removal Aid	Rx	8162
Provox FreeHands FlexiVoice Strong: 1 Strong Membrane, 1 Arch, 1 Removal Aid	Rx	8163
Provox FreeHands FlexiVoice XtraStrong: 1 XtraStrong Membrane, 1 Arch, 1 Removal Aid	Rx	8166

FreeHands FlexiVoice: Non-sterile, reusable, for single patient use.



Provox® Life™ FreeHands HME

An everyday HME that offers both the freedom to speak hands-free and with finger occlusion when combined with Provox FreeHands FlexiVoice.

- Reduces mucus production and coughing*
- Easy removal of HME from Provox FreeHands FlexiVoice without the need for Provox Removal Aid
- Compatible with all Provox Life adhesives, Provox Life LaryTube and Provox Life LaryButton

Product	Rx	Qty	REF#
Provox Life FreeHands HME	Rx	30 pcs	7440

Non-sterile, for single use.
Not compatible with Provox® attachments.



*Data on file



Provox® FreeHands Support™

Designed to reduce stomal movement and improve voice quality when speaking hands-free with Provox FreeHands FlexiVoice.

- Two-part system using the Provox FreeHands Support and Provox FreeHands Support Adhesive
- Provides extra support to the stoma and adhesive baseplate during free-hands speech
- Available in three depths for a personalized fit

Product	Qty	REF#
Provox FreeHands Support Starter Set*: 1 Support Flat, 1 Support Medium, 1 Support Deep	1 set	8020
Provox FreeHands Support Flat*	1 pc	8021
Provox FreeHands Support Medium*	1 pc	8022
Provox FreeHands Support Deep*	1 pc	8023

FreeHands Support: Non-sterile, reusable, for single patient use.

FreeHands Support Adhesive: Non-sterile, for single use.

*FreeHands Support Adhesive sold separately.



Provox® FreeHands Support™ Adhesive

Product	Qty	REF#
Provox FreeHands Support Adhesive	15 pcs	8024

Non-sterile, for single use.



Provox® FreeHands FlexiVoice™ Arch

Prevents fabric from accidentally occluding the opening of the Provox FlexiVoice speaking valve.

Product	Rx	Qty	REF#
Provox FreeHands FlexiVoice Arch	Rx	5 pcs	8165

Non-sterile, reusable, for single patient use.



Provox[®] Life[™] Stability Adhesive

A firm, everyday adhesive with stabilizing bars that provide additional support for deep stomas.

- Ideal for those who speak frequently or speak hands-free
- Provides a strong seal
- Clover-shaped adhesive for easy application and better fit
- Coupling with SecureFit[™] technology gives a click to confirm the HME is securely in place
- Compatible with all Provox Life HMEs



Product	Qty	REF#
Provox Life Stability Adhesive	15 pcs	8263

Non-sterile, for single use.
Not compatible with Provox[®] HMEs.



Care



Provox[®] Life[™] Shower

Protects the stoma from water when showering.

- Exchange your Provox Life HME with this while enjoying a shower; then replace with an HME when finished
- Compatible with all Provox Life attachments

Product	Qty	REF#
Provox Life Shower	1 pc	8308

Non-sterile, reusable, for single patient use.
Not compatible with Provox[®] attachments.



Provox[®] Adhesive Strip[™]

Designed to protect Provox Life Night Adhesive or Provox Luna Adhesive while showering.

Product	Qty	REF#
Provox Adhesive Strip	10 pcs	8015

Non-sterile, for single use.





Provox® Cleaning Towel

Cleans the skin before applying an adhesive.

- Cleans and removes oil from the skin
- Alcohol-based and unscented

Product	Qty	REF#
Provox Cleaning Towel	200 pcs	7244

Non-sterile, for single use.

Includes: 20 resealable pouches of 10 towels.



Provox® Skin Barrier

Provides a protective layer between skin and adhesive.

- Alcohol-free
- Use after cleaning the skin and before applying an adhesive
- May help improve adhesive seal

Product	Qty	REF#
Provox Skin Barrier	50 pcs	8011

Non-sterile, for single use.



Provox® Adhesive Remover

Helps remove an adhesive.

- Alcohol-free
- Makes removal of adhesive and adhesive residue easier

Product	Qty	REF#
Provox Adhesive Remover	50 pcs	8012

Non-sterile, for single use.





Skin Tac™ Wipe*

Provides a tacky barrier between adhesive and skin.

Product	Qty	REF#
Skin Tac Wipe	50 pcs	MS407W

Non-sterile, for single use.



*Manufactured by Torbot Group Inc.

Provox® Silicone Glue

Improves the adhesion between the skin and the adhesive.

- 30mL volume

Product	Qty	REF#
Provox Silicone Glue	1 pc	7720

Non-sterile, for single patient use.

Bottle with brush cap, for multiple applications.



Breathing — Provox®

Products in this section are **not** compatible with any Provox® Life™ products.





Provox® XtraMoist™ HME

Heat and moisture exchanger (HME) that makes inhaled air more humid. Use it during the day, when you're taking it easy.

- Provides high humidification with comfortable breathing
- Reduces coughing and mucus production*
- Easy stomal occlusion for voicing
- Low-profile design

Product	Qty	REF#
Provox XtraMoist HME	30 pcs	7290

Non-sterile, for single use.



Provox XtraMoist HME is compatible with the following Provox® attachments: Provox® FlexiDerm, OptiDerm, StabiliBase, StabiliBase OptiDerm, XtraBase, Provox LaryTube, and Provox LaryButton

Not compatible with Provox® Life™ attachments

Provox® XtraFlow™ HME

HME that helps make it easier to breathe. Use it during the day when you're physically active.

- Provides humidification with low breathing resistance
- Reduces coughing and mucus production*
- Easy stomal occlusion for voicing
- Low-profile design

Product	Qty	REF#
Provox XtraFlow HME	30 pcs	7291

Non-sterile, for single use.



Provox XtraFlow HME is compatible with the following Provox® attachments: Provox® FlexiDerm, OptiDerm, StabiliBase, StabiliBase OptiDerm, XtraBase, Provox LaryTube, and Provox LaryButton

Not compatible with Provox® Life™ attachments

Provox® Micron HME™

Not only an HME, but also an effective bacteria, virus, pollen and dust filter (HMEF).

- A highly-effective bacterial and viral filter (≥99% efficiency)*
- Reduces coughing and mucus production*

Product	Rx	Qty	REF#
Provox Micron HME	Rx	5 pcs	7247
Provox Micron HME	Rx	30 pcs	7248

Non-sterile, for single use.

Note: Provox Micron filtration capacity may vary depending on the size, shape and speed of airborne particles. Since there are other pathways for pathogens to enter your body, Provox Micron cannot guarantee total protection.



Provox Micron HME is compatible with the following Provox® attachments: Provox® FlexiDerm, OptiDerm, StabiliBase, StabiliBase OptiDerm, XtraBase, Provox LaryTube, and Provox LaryButton

Not compatible with Provox® Life™ attachments

*Data on file



Provox® Luna®

A nighttime solution designed to help you sleep comfortably, soothe the skin and improve lung health.

- Soft and smooth for nighttime comfort
- Adhesive made of hydrogel to soothe and cool the skin
- Excellent humidification compared to other Provox HMEs*
- Low breathing resistance for easy nighttime breathing
- Side openings to prevent occlusion while sleeping and, if needed, allow for manual occlusion to speak

Product	Qty	REF#
Provox Luna HME	30 pcs	8013
Provox Luna Adhesive	15 pcs	8014

Non-sterile, for single use.

Note: Do not use skin barrier, wipe, cream, alcohol or any other skin prep prior to applying Provox Luna.

Provox Luna HME is not designed for daytime speech.



Provox Luna HME and Provox Luna adhesive are meant to be used as a system and are not interchangeable with other Provox and Provox Life HMEs or attachments.

Provox® Luna® ShowerAid

Protects the stoma from water entering the airway while showering with Provox Luna.



Provox® Adhesive Strip™

Designed to protect Provox Life Night Adhesive or Provox Luna Adhesive while showering.

Product	Qty	REF#
Provox Adhesive Strip	10 pcs	8015

Non-sterile, for single use.



*Data on file.



Provox® FreeHands HME® Moist

Heat and moisture exchanger (HME) that makes inhaled air more humid. Use it during the day, when you're taking it easy.

- To be combined with Provox FreeHands FlexiVoice when speaking hands-free
- Provides high humidification with comfortable breathing
- Reduces mucus production and coughing*

Product	Rx	Qty	REF#
Provox FreeHands HME Moist	Rx	30 pcs	8220

Non-sterile, for single use.



Provox FreeHands HME Moist is compatible with the following Provox® attachments: Provox® FlexiDerm, OptiDerm, StabiliBase, StabiliBase OptiDerm, XtraBase, Provox LaryTube, and Provox LaryButton

Not compatible with Provox® Life™ attachments

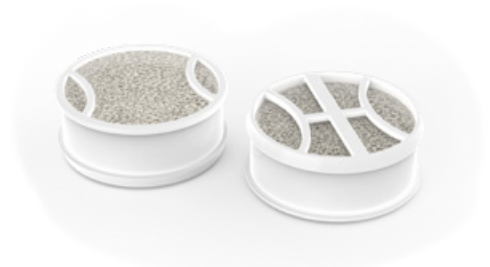
Provox® FreeHands HME® Flow

HME that helps make it easier to breathe. Use it during the day when you're physically active.

- To be combined with Provox FreeHands FlexiVoice when speaking hands-free
- Provides humidification with low breathing resistance
- Reduces mucus production and coughing*

Product	Rx	Qty	REF#
Provox FreeHands HME Flow	Rx	30 pcs	8221

Non-sterile, for single use.



Provox FreeHands HME Flow is compatible with the following Provox® attachments: Provox® FlexiDerm, OptiDerm, StabiliBase, StabiliBase OptiDerm, XtraBase, Provox LaryTube, and Provox LaryButton

Not compatible with Provox® Life™ attachments

Removal Aid

Removes the Provox FreeHands HME from the Provox FlexiVoice speaking valve.

Product	Qty	REF#
Removal Aid	2 pcs	7745

Non-sterile, reusable.



*Data on file



Provox® HME Cap™

Makes it possible for the Provox FreeHands HME to be used during sleep.

- Used with Provox FreeHands HME
- Cap can be occluded manually for speech
- Matte titanium

Product	Rx	Qty	REF#
Provox HME Cap	Rx	1 pc	7730

Non-sterile, reusable, for single patient use.



Provox® XtraBase®

An everyday adhesive for speaking with finger occlusion or hands-free.

- For a flat or somewhat deeper stoma
- Sticks well to the skin
- Convex shape with more durable and rigid center for better adhesion
- For use with the following Provox® HMEs:
Provox XtraMoist, Provox XtraFlow, Provox Micron HME, Provox FreeHands HME Flow, Provox FreeHands HME Moist
- Not compatible with Provox® Life™ HMEs

Product	Qty	REF#
Provox XtraBase	20 pcs	7265

Non-sterile, for single use.



Provox® StabiliBase™

An everyday adhesive that provides a superior seal and support for the stoma when speaking hands-free.

- Also provides support when speaking frequently with finger occlusion
- Sticks well to the skin
- Stabilizing bars provide additional support for deep stomas
- Provox StabiliBase OptiDerm is suitable for sensitive skin
- For use with the following Provox® HMEs:
Provox XtraMoist, Provox XtraFlow, Provox Micron HME, Provox FreeHands HME Flow, Provox FreeHands HME Moist
- Not compatible with Provox® Life™ HMEs

Product	Qty	REF#
Provox StabiliBase	15 pcs	7289
Provox StabiliBase OptiDerm	15 pcs	7318

Non-sterile, for single use.





Provox® FlexiDerm™

An everyday adhesive that provides a good seal around the stoma.

- For speaking with finger occlusion
- Soft and flexible with strong adhesive properties
- Ideal for when the area around the stoma is flat
- For use with the following Provox® HMEs:
Provox XtraMoist, Provox XtraFlow, Provox Micron HME,
Provox FreeHands HME Flow, Provox FreeHands HME Moist
- Not compatible with Provox® Life™ HMEs

Product	Qty	REF#
Provox FlexiDerm Round	20 pcs	7253
Provox FlexiDerm Oval	20 pcs	7254
Provox FlexiDerm Plus	20 pcs	7331

Non-sterile, for single use.



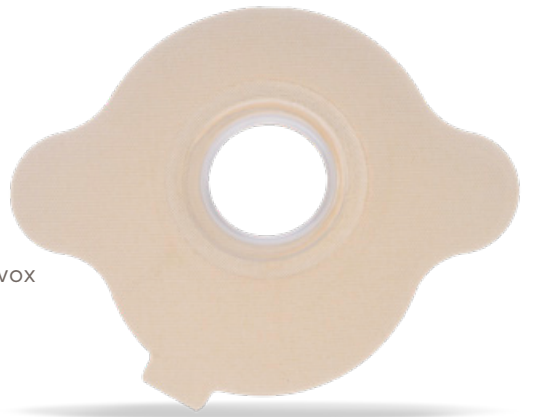
Provox® OptiDerm™

An everyday adhesive for when the skin feels sore or irritated.

- For sensitive skin
- Often used immediately after surgery or radiotherapy
- For use with the following Provox® HMEs:
Provox XtraMoist, Provox XtraFlow, Provox Micron HME, Provox
FreeHands HME Flow, Provox FreeHands HME Moist
- Not compatible with Provox® Life™ HMEs

Product	Qty	REF#
Provox OptiDerm Round	20 pcs	7255
Provox OptiDerm Oval	20 pcs	7256
Provox OptiDerm Plus	20 pcs	7332

Non-sterile, for single use.



Compare shape options to get a good seal:

Round, Oval and Plus
(FlexiDerm and OptiDerm Only)

Round —————

Oval —————

Plus —————

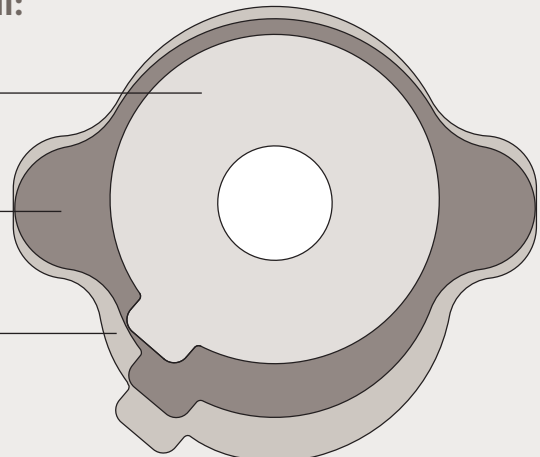


Illustration is to scale but is not actual size.
Color for illustration purposes only.

Provox® LaryTube™

For maintaining the opening of the tracheostoma while supporting pulmonary rehabilitation with the use of a Provox HME.

- Soft, silicone tubes are available in Standard, Fenestrated and with Ring
- Standard and Fenestrated Tubes can be secured with Provox TubeHolder, Provox LaryClip or Freevent Neckband, while the LaryTube with Ring is designed to be secured with a Provox adhesive

ID = inner diameter
OD = outer diameter
L = length
(all in mm)

Provox LaryTube (Standard, Fenestrated and with Ring) is compatible with the following Provox® HMEs:
Provox XtraMoist, Provox XtraFlow, Provox Micron HME, Provox FreeHands HME Flow, Provox FreeHands HME Moist

Not compatible with Provox® Life™ HMEs

Provox® LaryTube™ Standard

Use with or without voice prosthesis.*

Product	Rx	ID	OD	L	REF#	Product	Rx	ID	OD	L	REF#
Standard LaryTube 8/27	Rx	9.5	12.0	27	7601	Standard LaryTube 10/27	Rx	12.0	15.0	27	7609
Standard LaryTube 8/36	Rx	9.5	12.0	36	7602	Standard LaryTube 10/36	Rx	12.0	15.0	36	7610
Standard LaryTube 8/55	Rx	9.5	12.0	55	7603	Standard LaryTube 10/55	Rx	12.0	15.0	55	7611
Standard LaryTube 9/27	Rx	10.5	13.5	27	7605	Standard LaryTube 12/27	Rx	13.5	17.0	27	7613
Standard LaryTube 9/36	Rx	10.5	13.5	36	7606	Standard LaryTube 12/36	Rx	13.5	17.0	36	7614
Standard LaryTube 9/55	Rx	10.5	13.5	55	7607	Standard LaryTube 12/55	Rx	13.5	17.0	55	7615

Non-sterile, reusable, for single patient use.
Includes: 5 XtraFlow HME.



Provox® LaryTube™ Fenestrated

Fenestrations allow airflow through to the voice prosthesis.

Product	Rx	ID	OD	L	REF#	Product	Rx	ID	OD	L	REF#
Fenestrated LaryTube 8/36	Rx	9.5	12.0	36	7637	Fenestrated LaryTube 10/36	Rx	12.0	15.0	36	7643
Fenestrated LaryTube 8/55	Rx	9.5	12.0	55	7638	Fenestrated LaryTube 10/55	Rx	12.0	15.0	55	7644
Fenestrated LaryTube 9/36	Rx	10.5	13.5	36	7640	Fenestrated LaryTube 12/36	Rx	13.5	17.0	36	7646
Fenestrated LaryTube 9/55	Rx	10.5	13.5	55	7641	Fenestrated LaryTube 12/55	Rx	13.5	17.0	55	7647

Non-sterile, reusable, for single patient use.
Includes: 5 XtraFlow HME and 1 Provox Brush.





Provox® LaryTube™ with Ring

Use with or without voice prosthesis.*

Product	Rx	ID	OD	L	REF#	Product	Rx	ID	OD	L	REF#
With Ring LaryTube 8/36	Rx	9.5	12.0	36	7624	With Ring LaryTube 10/36	Rx	12.0	15.0	36	7628
With Ring LaryTube 8/55	Rx	9.5	12.0	55	7625	With Ring LaryTube 10/55	Rx	12.0	15.0	55	7629
With Ring LaryTube 9/36	Rx	10.5	13.5	36	7626	With Ring LaryTube 12/36	Rx	13.5	17.0	36	7630
With Ring LaryTube 9/55	Rx	10.5	13.5	55	7627	With Ring LaryTube 12/55	Rx	13.5	17.0	55	7631

Non-sterile, reusable, for single patient use.
Includes: 5 XtraFlow HME.

Compatible with the following Provox adhesives: Provox® FlexiDerm™, OptiDerm™, StabiliBase™, StabiliBase OptiDerm™, XtraBase®. Not compatible with Provox Life adhesives.

*Clinician may custom fenestrate for use with voice prosthesis.



Provox® LaryButton™

For maintaining the opening of the stoma while providing pulmonary rehabilitation with use of a Provox HME.

- Soft, silicone buttons may be secured with Provox TubeHolder, Provox LaryClip or Freevent Neckband, if required

Provox LaryButton is compatible with the following Provox® HMEs:
Provox XtraMoist, Provox XtraFlow, Provox Micron HME, Provox FreeHands HME Flow, Provox FreeHands HME Moist

Not compatible with Provox® Life™ HMEs

Product	Rx	OD	L	REF#	Product	Rx	OD	L	REF#
Provox LaryButton 12/8	Rx	12	8	7671	Provox LaryButton 12/18	Rx	12	18	7685
Provox LaryButton 14/8	Rx	14	8	7672	Provox LaryButton 14/18	Rx	14	18	7686
Provox LaryButton 16/8	Rx	16	8	7673	Provox LaryButton 16/18	Rx	16	18	7687
Provox LaryButton 18/8	Rx	18	8	7674	Provox LaryButton 18/18	Rx	18	18	7688

Non-sterile, reusable, for single patient use.



CONVERSION CHART The below chart is meant to be a guide as to which Provox LaryButton to try if you are converting from a Barton-Mayo button. Atos Medical makes no claims that the specifications of the suggested LaryButton are identical to those of the corresponding Barton-Mayo Button. Please consult your clinician to help determine the best size button for you.

Barton-Mayo™ Button				Provox® LaryButton™		
Size		Diameter	Length	Diameter	Length	REF#
9	Short	13.5	15	12	8	7671
	Regular	13.5	22	12	18	7685
	Long	13.5	30			
10	Short	15.0	15	14	8	7672
	Regular	15.0	22	14	18	7686
	Long	15.0	30			
12	Short	17.0	15	16	8	7673
	Regular	17.0	22	16	18	7687
	Long	17.0	30			
14	Short	19.0	15	18	8	7674
	Regular	19.0	22	18	18	7688
	Long	19.0	30			



Provox® ShowerAid™

Protects the stoma from water entering the airway when showering.

- Replace Provox HME with Provox ShowerAid while enjoying a shower and switch back when finished



Provox ShowerAid	Qty	REF#
Provox ShowerAid	1 pc	7260

Non-sterile, reusable, for single patient use.
Includes: 1 Provox FlexiDerm Oval Adhesive.

Not compatible with Provox® Life™ attachments or Provox Luna adhesive.

Provox® BasePlate Adaptor

Makes it possible to attach a 15mm connector to a Provox attachment.

- Designed for use with a Provox attachment to attach a device with an ISO 15mm standard connector



Product	Qty	REF#
Provox BasePlate Adaptor	1 pc	7263

Non-sterile, reusable, for single patient use.

Not compatible with Provox® Life™ attachments.

Provox® HME Cassette Adaptor

Supports pulmonary rehabilitation with the use of a Provox HME and a tracheostomy tube.

- Designed for a tracheostomy tube with a 15mm ISO connector



Product	Qty	REF#
Provox HME Cassette Adaptor	1 pc	7246

Non-sterile, reusable, for single patient use.

Not compatible with Provox® Life™ HMEs.

Supplemental Products



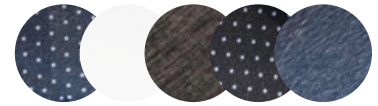
Freevent™ Stoma Cover Scarf

Discreet stoma coverage made of trevira/georgette.

- Ideal for low-neck and low-cut clothing, such as shirts and blouses
- VELCRO® brand fastening makes it easy to put on and take off
- Fastening is adjustable to fit neck size 13 – 16.5 in (33 – 42 cm)
- Size: width 12in (30cm), length 10.6in (27cm)

Product	Qty	REF#
Freevent Stoma Cover Scarf, Blue with White Dots	1 pc	1410A1TG
Freevent Stoma Cover Scarf, White	1 pc	1410A3TG
Freevent Stoma Cover Scarf, Black	1 pc	1410A4TG
Freevent Stoma Cover Scarf, Black with White Dots	1 pc	1410A9TG
Freevent Stoma Cover Scarf, Dark Blue	1 pc	1410A15TG

Non-sterile, reusable, for single patient use.



Freevent™ Cotton Stoma Cover T-Shirt

Discreet stoma coverage made of cotton.

- The side-zip closure makes it easy to put on and take off
- Size: width 14.5in (37cm), length 10in (25cm)

Product	Qty	REF#
Freevent Cotton Stoma Cover T-shirt, White	1 pc	1413RSR1
Freevent Cotton Stoma Cover T-shirt, Beige	1 pc	1413RSR2
Freevent Cotton Stoma Cover T-shirt, Dark Blue	1 pc	1413RSR8
Freevent Cotton Stoma Cover T-shirt, Black	1 pc	1413RSR9
Freevent Cotton Stoma Cover T-shirt, Grey	1 pc	1413RSR11

Non-sterile, reusable, for single patient use.





Provox® Tracheofix Foam Stoma Cover

Polyurethane foam cover with two adhesive strips.

- Second adhesive strip helps foam cover adhere more securely to skin
- 70 x 70 x 3mm (approximately 2.75 x 2.75 x 0.12in)



Product	Qty	REF#
Provox Tracheofix Foam Stoma Cover	10 pcs	1433H

Non-sterile, for single use.

Tracho-Foam®

Double-sided adhesive foam discs.

- May be used with Provox Life Standard or Stability; and Provox XtraBase, StabiliBase or FlexiDerm adhesives*
- For irregularly shaped and/or deep stomas, may provide a solution when a good seal is difficult to achieve with adhesive alone
- May provide a comfortable, airtight seal that conforms to the contours of an irregularly-shaped and or deep stoma
- Available in two sizes for use with various sizes and shapes of adhesives



Product	Qty	REF#
Tracho-Foam Disc Standard 0.125 x 1in ID x 2.25in. OD	20 pcs	TF214
Tracho-Foam Disc Large 0.125 x 1in ID x 2.625in OD	20 pcs	TF258

Non-sterile, for single use.

***Caution:** Not to be used with Provox Life Sensitive or Night adhesives; Provox Luna or OptiDerm adhesives.

Kapi-Gel® Tracheostoma Spacer*

Intended to help create a better seal around tracheostoma support devices and are suitable for uneven stomal anatomy.

- A 43mm diameter, 3 or 5mm thick circular, tacky, laminated silicone gel spacer
- Available in two inner diameter openings to accommodate different diameter tubes and buttons (8mm opening fits tubes or buttons with <14mm OD; 12mm opening fits tubes or buttons with >12mm OD)
- Can improve tracheostoma device fitting, act as a cushion behind tubes and buttons during manual occlusion and may help reduce air leakage
- Can also be used to shorten the shaft of the LaryTube or LaryButton that is inserted in the stoma



Product	Qty	Rx	REF#
Kapi-Gel 8mm ID, 3mm Thick	10 pcs	Rx	LATNG2008
Kapi-Gel 12mm ID, 3mm Thick	10 pcs	Rx	LATNG2012
Kapi-Gel 8mm ID, 5mm Thick	10 pcs	Rx	LATNG4008
Kapi-Gel 12mm ID, 5mm Thick	10 pcs	Rx	LATNG4012

Non-sterile, for single use.

*Manufactured by Kapitex Healthcare Ltd.

Barton-Mayo™ Tracheostoma Button*

Developed to provide leak-proof tracheostoma valve retention for total laryngectomy patients.

- Can be used with a Provox heat and moisture exchanger (HME)**
- Enhances speech with hands-free stomal occlusion
- Another option for positive stoma sealing
- Wide range of sizes available



Product	Size	Models	Diameter (mm)	Length (mm)	Rx	REF#
Barton-Mayo Tracheostoma Button	9	Short	13.5	15	Rx	ENBMB091
		Regular		22		ENBMB092
		Long		30		ENBMB093
Barton-Mayo Tracheostoma Button	10	Short	15.0	15	Rx	ENBMB101
		Regular		22		ENBMB102
		Long		30		ENBMB103
Barton-Mayo Tracheostoma Button	12	Short	17.0	15	Rx	ENBMB121
		Regular		22		ENBMB122
		Long		30		ENBMB123
Barton-Mayo Tracheostoma Button	14	Short	19.0	15	Rx	ENBMB141
		Regular		22		ENBMB142
		Long		30		ENBMB143
Barton-Mayo Sizing Kit	Includes trial buttons for each available Barton-Mayo Button					ENBMBKIT

Non-sterile, reusable, for single patient use.

Not available in Canada.

*Manufactured by Medical Innovations.

** Compatible with Provox XtraMoist™, Provox XtraFlow™, Provox Micron HME®, Provox FreeHands HME® Flow, Provox FreeHands HME® Moist; Not compatible with Provox® Life™ HMEs.

Hospital to Home



Provox[®] Life[™] Laryngectomy Pulmonary Kit (LPK)

Comprehensive, evidence-based kits for pulmonary health and post-surgical laryngectomy care.

Provox Life Laryngectomy Kits provide all-in-one packaging for immediate, post-operative, 24/7 pulmonary rehabilitation – a convenient, in-hospital pulmonary care system that enhances patient outcomes. Clinical studies have shown that most laryngectomized patients who use an HME twenty-four hours a day (even while sleeping) experience reduced coughing and mucus production and require less suctioning.* Our cost-effective, all-inclusive pulmonary system may also reduce length of stay and readmission rates.

Immediate post-operative use of an HME in comparison to external humidification results in:

- decreased costs
- decreased adverse events (mucus plugs) in the hospital
- decreased coughing
- better compliance and fewer problems sleeping
- higher overall patient and nursing satisfaction

ALL BASE KITS CONTAIN:

Stomal Support + Accessories

- Provox Life LaryTube (2 pcs)
- Provox TubeBrush (6 pcs)
- Freevent Neckband (10 pcs)

Pulmonary Rehabilitation + Accessories

- Provox Life Home HME (30 pcs)
- Provox Life Night HME (30 pcs)
- Provox Life Shower (1 pc)

Support Resources

- HME Change Log (1 pc)
- Bedside Guide + Sign (2 pcs)
- Patient Communication Devices



Base Kit	REF#
Provox Life LPK - Size 8 (LaryTube 8/36, 8/55)	6130
Provox Life LPK - Size 9 (LaryTube 9/36, 9/55)	6131
Provox Life LPK - Size 10 (LaryTube 10/36, 10/55)	6132
Provox Life LPK - Size 12 (LaryTube 12/36, 12/55)	6133

Base Kit + EL Option 1	REF#
Base Kit Size 8 + Provox SolaTone Plus	6134
Base Kit Size 9 + Provox SolaTone Plus	6135
Base Kit Size 10 + Provox SolaTone Plus	6136
Base Kit Size 12 + Provox SolaTone Plus	6137

Base Kit + EL Option 2	REF#
Base Kit Size 8 + Provox TruTone Plus	6138
Base Kit Size 9 + Provox TruTone Plus	6139
Base Kit Size 10 + Provox TruTone Plus	6140
Base Kit Size 12 + Provox TruTone Plus	6141

Non-sterile, for single patient use.

For Clinician Use Only.

*Data on file

Provox[®] Life[™] Coming Home

An intuitive tool designed to help with the transition from hospital to home for patients who have had a laryngectomy.

Provox Life Coming Home is a durable case containing products and information designed to help in the transition to a new way of life after laryngectomy. Coming Home introduces products in a step-by-step, easy-to-understand way, so the user knows which products are suitable for different situations. It contains a removable carrying case for keeping supplies handy when going out.



CARE Products designed to help take care of the skin surrounding the stoma.



Provox Cleaning Towel (10 pcs)



Provox Skin Barrier (10 pcs)



Provox Adhesive Remover (10 pcs)



DAY Adhesives and heat and moisture exchangers (HMEs) designed to use during the day.



Provox Life Home HME (10 pcs)



Provox Life Go HME (10 pcs)



Provox Life Standard Adhesive (10 pcs)



Provox Life Sensitive Adhesive (10 pcs)



Provox Life Shower (1 pc)



NIGHT HMEs and adhesives designed to help take care of the skin, improve lung health and sleep more comfortably.



Provox Life Night HME (10 pcs)



Provox Life Night Adhesive (10 pcs)



GOING OUT A carrying case with products needed when going out.



Provox Life Protect HME (2 pcs)



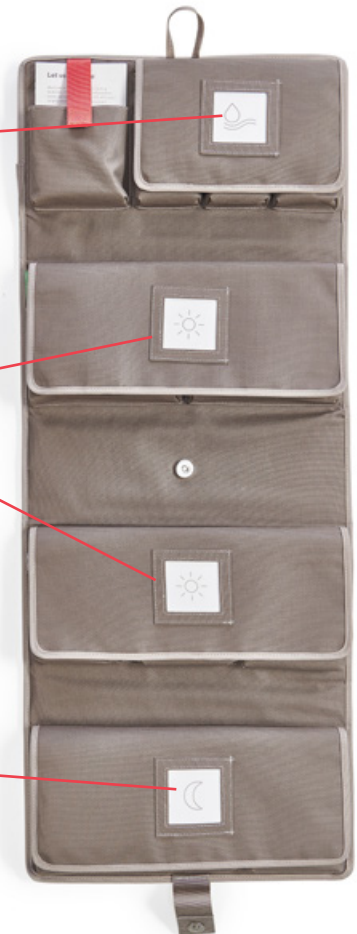
Provox Life Stability Adhesive (3 pcs)



Mirror (1 pc)



Flashlight (1 pc)



Non-sterile, for single patient use.

Provox Life Coming Home is available through clinicians only.

Jaw Mobility





TheraBite® Jaw Motion Rehabilitation System™

For restoring jaw mobility after trismus and mandibular hypomobility.

The TheraBite Jaw Motion Rehabilitation System and TheraBite ActiveBand are clinically proven to be effective in treating trismus and in improving muscle strength and endurance of the muscles of mastication, respectively. Both offer a home rehabilitation program, encouraging continuity and compliance.

The TheraBite Jaw Motion Rehabilitation System is an anatomically correct, effective, portable and user-controlled form of jaw therapy. It is durable, lightweight and available in both adult and pediatric versions.

Bite Pads

The self-adhesive Bite Pads spread the force across the teeth and can be trimmed for customized protection. The Bite Pads come in adult, pediatric and edentulous (toothless) versions.

Range of Motion Scales

The disposable Range of Motion Scales allow the user and his/her clinician to monitor the progress of the treatment.

Hand-Aid

The Hand-Aid assists the user in maintaining constant opening during stretching or strengthening programs.

Exercise Log

The daily and monthly Exercise Log enables the user and his/her treating clinician to log the daily and monthly progress.





Product	Qty	REF#
Adult TheraBite Jaw Motion Rehabilitation System	1 system	TH001
Pediatric TheraBite Jaw Motion Rehabilitation System	1 system	TH002
TheraBite ActiveBand	1 pc	8260
TheraBite Range of Motion Scales	150 pcs	SC001
TheraBite Bite Pads, Regular	4 pcs	PA001
TheraBite Bite Pads, Edentulous	4 pcs	PA002
TheraBite Bite Pads, Pediatric	4 pcs	PA003

TheraBite Jaw Mobilizer: Non-sterile, reusable. TheraBite Bite Pads: Non-sterile, for single patient use.

Adult system includes: Jaw Mobilizer, 4 Regular Bite Pads, Hand-Aid, 30 Range of Motion Scale, Carrying Bag, Instructions for Use, Exercise Log.

Pediatric system includes: Jaw Mobilizer, 4 Pediatric Bite Pads, Hand-Aid, 30 Range of Motion Scale, Carrying Bag, Instructions for Use, Exercise Log.

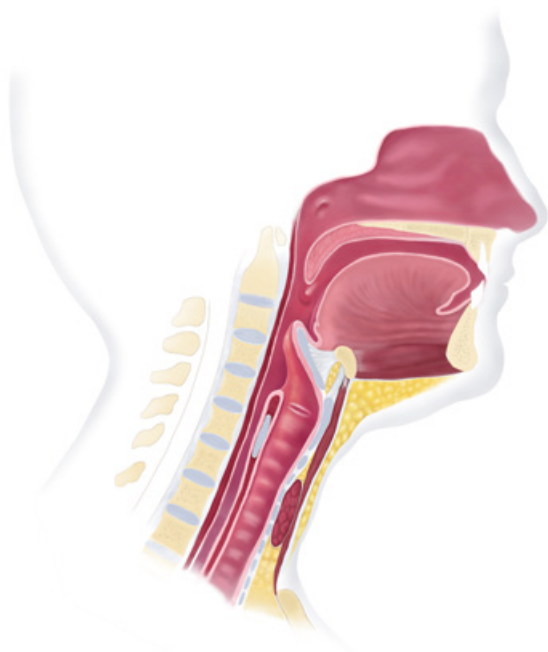


TheraBite® ActiveBand™

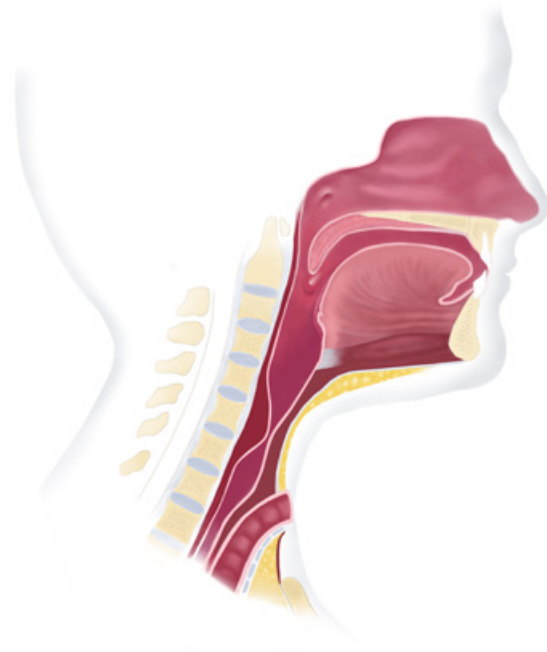
TheraBite ActiveBand is an addition to the TheraBite system that provides resistance to mouth closure. The intended use of the device is to increase muscle strength and endurance of the muscles of mastication (masseter muscle, temporalis muscle, medial and lateral pterygoid muscle).



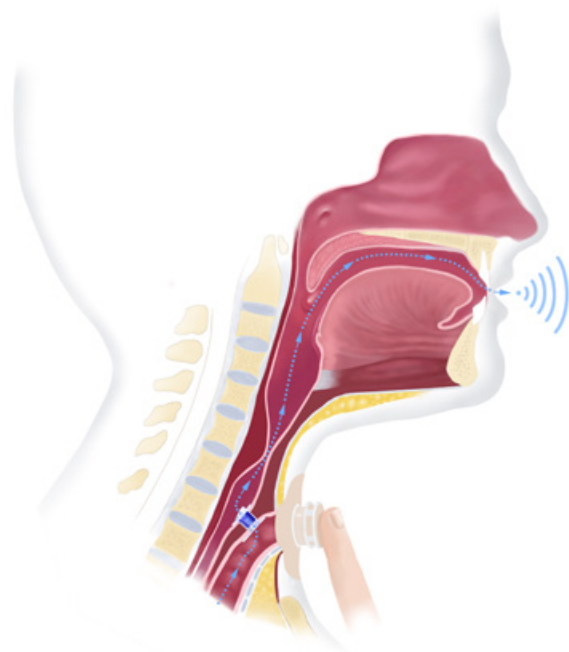
Laryngectomy Anatomy Illustrations



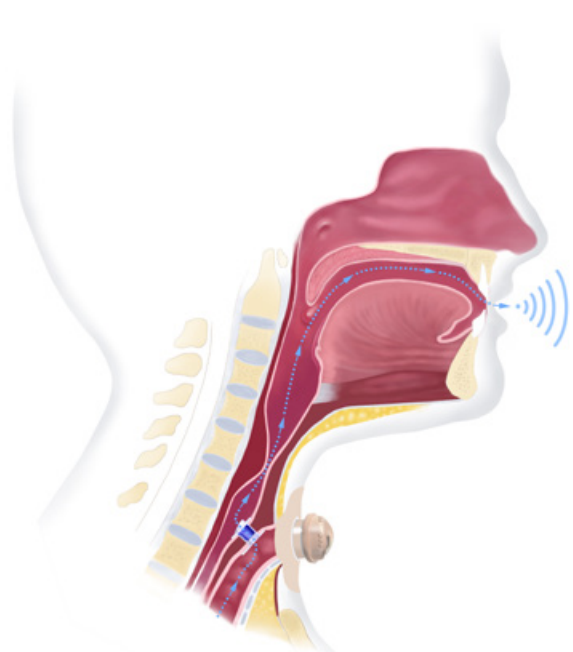
Before total laryngectomy



After total laryngectomy



Speaking with the Provox voice prosthesis:
Manual occlusion of a Provox® Life™ HME attached
with a Provox® Life™ adhesive.



Speaking with the Provox voice prosthesis:
Hands-free with Provox® FreeHands FlexiVoice™
using Provox® Life™ FreeHands HME attached with a
Provox® Life™ adhesive.

Selection of references

Ward EC, Hancock K, Lawson N, van As-Brooks CJ. Perceptual characteristics of tracheoesophageal speech production using the new indwelling Provox Vega voice prosthesis: a randomized controlled crossover trial. *Head Neck*. 2011;33(1):13-9.

Serra A, Spinato G, Spinato R, Conti A, Licciardello L, Di Luca M, et al. Multicenter prospective crossover study on new prosthetic opportunities in post-laryngectomy voice rehabilitation. *J Biol Regul Homeost Agents*. 2017;31(3):803-9.

Hilgers FJ, Ackerstaff AH, van RM, Jacobi I, Balm AJ, Tan IB, et al. Clinical phase I/feasibility study of the next generation indwelling Provox voice prosthesis (Provox Vega). *Acta Otolaryngol*. 2010;130(4):511-9.

Hilgers FJ, Ackerstaff AH, Jacobi I, Balm AJ, Tan IB, van den Brekel MW. Prospective clinical phase II study of two new indwelling voice prostheses (Provox Vega 22.5 and 20 Fr) and a novel antegrade insertion device (Provox Smart Insert). *Laryngoscope*. 2010;120(6):1135-43.

Hancock K, Ward E, Lawson N, As-Brooks CJ. A prospective, randomized comparative study of patient perceptions and preferences of two types of indwelling voice prostheses. *Int J Lang Commun Disord*. 2012;47(3):300-9.

Kress P, Schafer P, Schwerdtfeger FP, Rosler S. Are modern voice prostheses better? A lifetime comparison of 749 voice prostheses. *Eur Arch Otorhinolaryngol*. 2014;271(1):133-40.

Serra A, DI MP, Spataro D, Maiolino L, Cocuzza S. Post-laryngectomy voice rehabilitation with voice prosthesis: 15 years experience of the ENT Clinic of University of Catania. Retrospective data analysis and literature review. *Acta Otorhinolaryngol Ital*. 2015;35(6):412-9.

Petersen JF, Lansaat L, Hilgers F, Brekel MVD. Solving periprosthetic leakage with a novel prosthetic device. *Laryngoscope*. 2018;129(10):2299-302.

Mayo-Yanez M, Calvo-Henriquez C, Chiesa-Estomba C, Lechien JR, Gonzalez-Torres L. Google Trends application for the study of information search behaviour on oropharyngeal cancer in Spain. *Eur Arch Otorhinolaryngol*. 2020.

Longobardi Y, Galli J, Di Cesare T, D'Alatri L, Settimi S, Mele D, Bussu F, Parrilla C. Optimizing Pulmonary Outcomes after Total Laryngectomy: Crossover study on new Heat and Moisture Exchangers. *Otolaryngology Head Neck Surg*. 2022.

Lorenz KJ. The development and treatment of periprosthetic leakage after prosthetic voice restoration. A literature review and personal experience part I: the development of periprosthetic leakage. *Eur Arch Otorhinolaryngol*. 2015;272(3):641-59.

Hilgers FJ, Ackerstaff AH, Balm AJ, Van den Brekel MW, Bing T, I, Persson JO. A new problem-solving indwelling voice prosthesis, eliminating the need for frequent Candida- and "underpressure"-related replacements: Provox ActiValve. *Acta Otolaryngol*. 2003;123(8):972-9.

Soolsma J, Van den Brekel MW, Ackerstaff AH, Balm AJ, Tan B, Hilgers FJ. Long-term results of Provox ActiValve, solving the problem of frequent candida- and "underpressure"-related voice prosthesis replacements. *Laryngoscope*. 2008;118(2):252-7.

Graville DJ, Palmer AD, Andersen PE, Cohen JI. Determining the efficacy and cost-effectiveness of the ActiValve: results of a long-term prospective trial. *Laryngoscope*. 2011;121(4):769-76.

Petersen JF, Lansaat L, Timmermans AJ, van der Noort V, Hilgers FJM, van den Brekel MWM. Postlaryngectomy prosthetic voice rehabilitation outcomes in a consecutive cohort of 232 patients over a 13-year period. *Head Neck*. 2019;41(3):623-31.

Timmermans AJ, Harmsen HJ, Bus-Spoor C, Buijsen KJ, van As-Brooks C, de Goffau MC, et al. Biofilm formation on the Provox ActiValve: Composition and ingrowth analyzed by Illumina paired-end RNA sequencing, fluorescence in situ hybridization and confocal laser scanning microscopy. *Head Neck*. 2015;38 Suppl 1:E432-40.

Hilgers FJ, Lorenz KJ, Maier H, Meeuwis CA, Kerrebijn JD, Vander P, V, et al. Development and (pre-) clinical assessment of a novel surgical tool for primary and secondary tracheoesophageal puncture with immediate voice prosthesis insertion, the Provox Vega Puncture Set. *Eur Arch Otorhinolaryngol*. 2013;270(1):255-62.

Lorenz KJ, Hilgers FM, Maier H. [A novel puncture instrument: the Provox-Vega(R) puncture set : Its use in voice prosthesis insertion following laryngectomy] in German. *HNO*. 2013;61(1):30-7.

Giordano L, Toma S, Teggi R, Palonta F, Ferrario F, Bondi S, et al. Satisfaction and Quality of Life in Laryngectomees after Voice Prosthesis Rehabilitation. *Folia Phoniatr Logop*. 2011;63(5):231-6.

Hilgers FJ, Balm AJ. Long-term results of vocal rehabilitation after total laryngectomy with the low-resistance, indwelling Provox voice prosthesis system. *Clin Otolaryngol Allied Sci*. 1993;18(6):517-23.

Free RH, Van der Mei HC, Elving GJ, van WR, Albers FW, Busscher HJ. Influence of the Provox Flush, blowing and imitated coughing on voice prosthetic biofilms in vitro. *Acta Otolaryngol*. 2003;123(4):547-51.

Watson PJ, Schlauch RS. Fundamental frequency variation with an electrolarynx improves speech understanding: a case study. *Am J Speech Lang Pathol*. 2009;18(2):162-7.

Cox SR, McNicholl K, Shadle CH, Chen WR. Variability of Electrolaryngeal Speech Intelligibility in Multitalker Babble. *Am J Speech*

The above references represent a selection. For more information contact Atos Medical AB or your local representative.

Contact Information

Below you will find our global addresses and contact information. Find your country and reach out to us. We are always here to help you!

**Head Office & Manufacturer:**

Atos Medical AB
Tel. +46 (0)415 198 00
info@atosmedical.com
www.atosmedical.com

Australia:

Atos Medical Pty Ltd
Tel. +61 1800 286 728
info.au@atosmedical.com
www.atosmedical.com.au

Austria:

Atos Medical Austria GmbH
Tel. +43 7472 6659-5
service.austria@atosmedical.com
www.atosmedical.de

Belgium:

Atos Medical BVBA / SPRL
Tel. +32 (0)2 218 55 50
info.be@atosmedical.com
www.atosmedical.be

Brazil:

Atos Medical Ltd
Tel. +55 11 2305 2022
info.br@atosmedical.com
www.atosmedical.com.br

Canada:

Atos Medical Canada Inc
Tel. +1 833 514 2867
info.ca@atosmedical.com
www.atosmedical.ca

France:

Atos Medical S.A.S.
Tel. +33 (0)1 49 08 01 00
info.fr@atosmedical.com
www.atosmedical.fr

Germany:

Atos Medical GmbH
Tel. +49 (0)800 53 53 667
info.de@atosmedical.com
www.atosmedical.de

Hungary:

Atos Medical AB Magyarorszag
Tel. + 36 70 377 2414
www.atosmedical.com

Italy:

Atos Medical Srl
Tel. +39 049 775 522
info.it@atosmedical.com
www.atosmedical.it

Japan:

Atos Medical Japan Inc.
Tel. +81 (0)3 4589 2830
info.jp@atosmedical.com
www.atosmedical.jp

The Netherlands:

Atos Medical B.V.
Tel. +31 (0)79 593 5000
info.nl@atosmedical.com
www.atosmedical.nl

New Zealand:

Atos Medical Ltd
Tel. +64 (0)4 576 2100
info.nz@atosmedical.com
www.atosmedical.co.nz

Nordic countries:

Tel. +46 (0)415-19820
kundtjanst@atosmedical.com
www.atosmedical.com

Poland:

Atos Medical Poland Sp. z o.o.
Tel. +48 22 295 00 16
biuro@atosmedical.com
www.atosmedical.com

Portugal:

Atos Medical Spain S.L.
Sucursal em Portugal
Tel. +351 212 539 281
info.pt@atosmedical.com
www.atosmedical.pt

Spain:

Atos Medical Spain S.L.
Tel. +34 93 323 91 95
info.es@atosmedical.com
www.atosmedical.es

Switzerland:

Atos Medical, Switzerland
Tel. +41 (0)44 380 60 90
info.ch@atosmedical.com
www.atosmedical.ch

UK:

Atos Medical UK
Tel. +44 (0)115 784 1899
info.uk@atosmedical.com
www.atosmedical.co.uk

US:

Atos Medical Inc.
Tel. +1 800 217 0025
info.us@atosmedical.com
www.atosmedical.com

Ordering Information (US only*)

Orders may be placed by contacting a Customer Service Representative at 1.800.217.0025 or online at www.shopatosmedical.com.

Address:

Atos Medical Inc.
2801 South Moorland Road
New Berlin, WI 53151-3743

Contact:

Tel. 1.800.217.0025
Fax. 1.844.389.4918
Email info.us@atosmedical.com

Office Hours: 8:00am-5:00pm Central Time (CT) Mon-Fri.

Extended Customer Service Hours: 7:00am-5:00pm CT Mon-Fri.

Individuals and Insurance

Companies Send Payments to:

Atos Medical Inc.
Dept CH 17589
Palatine, IL 60055-7589

Facilities Only:

Atos Medical Inc.
Dept CH 17510
Palatine, IL 60055-7510

The Atos Medical Insurance and Reimbursement teams are committed to helping you navigate through the insurance process to make it as smooth and easy as possible while getting the most from your benefits. We are also working hard to get in-network coverage with more insurance companies. This may mean easier access to products and better reimbursement options for you!

Forms and Insurance Information

Atos Medical will file claims for durable medical equipment (DME) orders upon request. For an insurance claim to be filed, the following needs to be completed and returned to our office:

- Patient Services Form (PSF)
- Valid Prescription Form with Medical Records (completed and signed by physician/prescriber)
- Front and back copies of all insurance cards
- Medicare Compliance Form if ordering a voice prosthesis (Medicare Only)

The type of DME equipment ordered, laryngectomy supplies or jaw motion rehabilitation supplies, will determine which forms are required. Forms can be found at www.atosmedical.us.

Patients with Medicare Coverage

If you have Traditional (also known as Original) Medicare coverage, Atos Medical will file claims for durable medical equipment (DME) on your behalf for payment consideration, some exclusions may apply.

Patients without Insurance or DME Coverage

A Patient Service Agreement is required to place an order (other documents may be required).

- To place an order, call 1.800.217.0025 and follow the prompts
- Order online at www.shopatosmedical.us
- Pay by Visa, MasterCard, American Express, Discover, bank draft, check or money order

Prescription Products

Products with Rx next to the name need a prescription from a physician or a non-physician eligible provider. The Rx must be on file with Atos Medical and have product specifically listed.

Caution: United States Federal law restricts these products to sale, distribution and use by or on the order of a physician or a licensed practitioner.

Payment - Terms of Sale

Net 30 days, from the date of the first statement, FOB New Berlin, WI. Check, Money Order, bank draft from your account, Visa, MC, American Express and Discover are accepted. Payment plans may be available. Insurance coverage, payment, co-payments, deductibles and some restrictions apply depending on the individual's insurance policy and medical need.

Returned Goods

Product must be returned in saleable condition, original packaging and contents may not be tampered with to receive a credit and/or exchange. Atos Medical reserves the right to reject or refuse any returns/exchanges if we feel the packaging has been tampered with in any way. Any product in client's possession longer than 90 days will not be considered for a return. Returns will not be accepted without prior authorization. Any request for returning a product must be received by Atos Medical Inc within 30 days of initiating the process of a return. Any return past that point will be canceled. Atos Medical Inc highly recommends using a reputable shipping carrier capable of providing proof of delivery. Proper packaging and fully insuring the return shipment is also recommended. Shipping charges and risk of loss on all return shipments are the responsibility of the client. Atos Medical reserves the right to change or amend this process at any time.

Hospitals and all other facility returns, please contact order.us@atosmedical.com to start the return process.

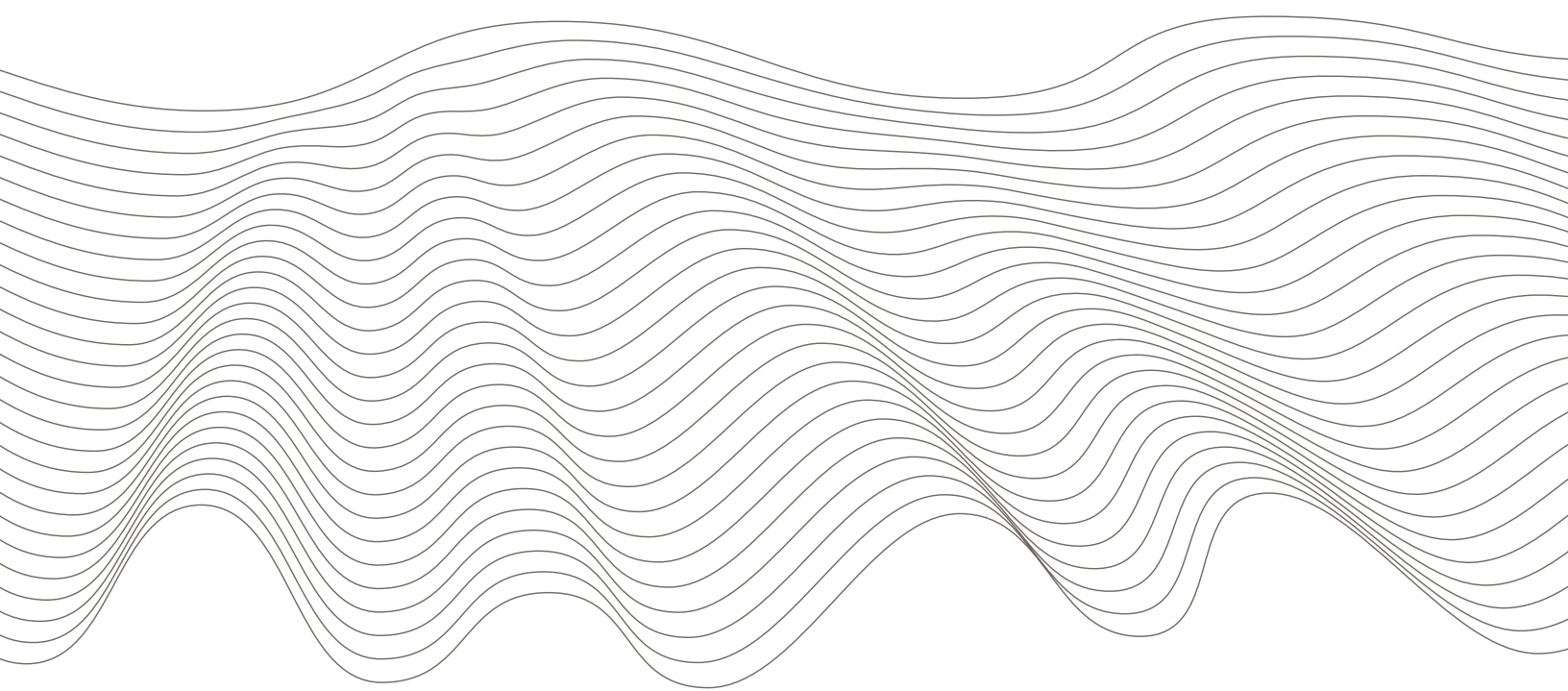
Privacy

Atos Medical has always respected the privacy of our clients. Like most health care providers, Atos Medical is subject to federal and state laws that protect the privacy of personal information related to medical services and products. The Health Insurance Portability and Accountability Act of 1996 (HIPAA) requires that we provide a Patient Services Agreement (PSA) and Notice of HIPAA Privacy Policy to you. This notice describes our legal duties and privacy practices related to your protected information. We are required to have a completed PSA and HIPAA Signature Form on file.



At Atos Medical, we are passionate about making life easier for people living with a neck stoma by providing personalized care and innovative solutions.

©Atos Medical Inc, 2023 | MC2521US, 030123
Atos and the Atos logo are trademarks of Coloplast A/S.



US Office:

Atos Medical Inc., 2801 South Moorland Road, New Berlin, WI 53151-3743

Tel. +1 800 217 0025, Fax. +1 844 389 4918

Email: info.us@atosmedical.com, Web: www.atosmedical.us, Online Ordering: www.shopatosmedical.com

Atos
Breathing-Speaking-Living