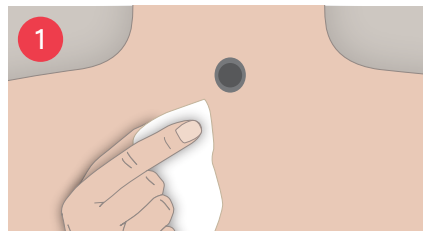


Provox Life Adhesives are designed for a better fit and more comfort. They include choices suitable for a variety of skin types and stoma contours, so you can find the one that's best for you.



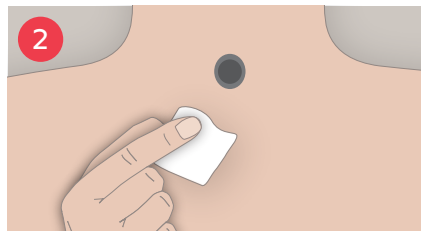
Simple steps to **APPLY** Provox Life Adhesive.



▶ **CLEAN** the skin around your stoma with Provox Cleaning Towel, or with mild soap and water. Let dry.



**Tip:** Shave all hair around the area of application.

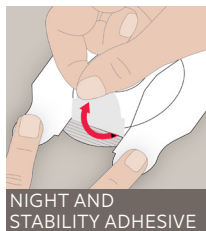


▶ **APPLY** Provox Skin Barrier. Let dry.

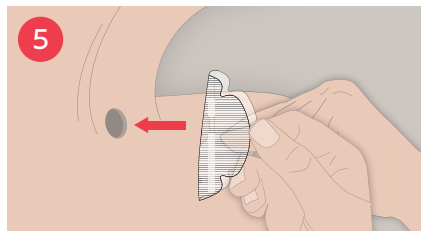
Note: DO NOT use Skin Barrier when applying Provox Life Night Adhesive.



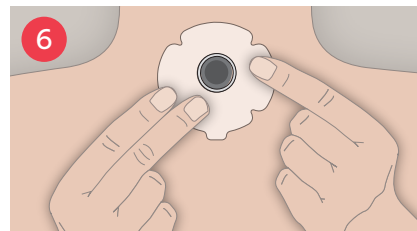
▶ When using Provox Life Sensitive Adhesive, **RUB** the adhesive between your hands to warm it up.



▶ **REMOVE** the protective paper.



▶ **PLACE** the adhesive. Line up the bottom ring of the adhesive with the lower lip of your stoma.



▶ **MASSAGE** the adhesive onto your skin.

Start from the center and move out.

Make sure there are no gaps or wrinkles.

### Tips for applying an adhesive:

- Touching the sticky layer with your fingers may reduce adhesion.
- If you need a stronger adhesion, use Skin Tac Wipe or Provox Silicone Glue sparingly.
- Attach the adhesive with the neck in a neutral position.



Skin Tac Wipe

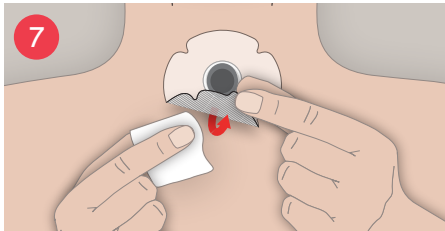


Provox Silicone Glue

### Tips for an airtight seal:

- Allow the adhesive to bond to your skin before speaking. For best results wait:  
Sensitive = 15 minutes  
Standard and Stability = 1 hour
- Always use two fingers to hold the adhesive in place when removing the HME.
- Remove the HME from the adhesive when you begin to cough.
- After a cough, carefully remove any mucus from the skin.
- Speaking with too much force may cause the seal to loosen.

Simple steps to **REMOVE** Provox Life adhesive.



► **REMOVE** the adhesive slowly, gently supporting the skin as you peel.

For Provox Life **Standard** Adhesive and Provox Life **Stability** Adhesive, first apply Provox Adhesive Remover on top of the adhesive.

Then lift the tab carefully and add more underneath the adhesive.

For **Sensitive**, apply Adhesive Remover or water under the adhesive.

**Night** adhesive should be removed with water only.



Provox Adhesive Remover

### Tips to minimize skin irritation (ex. redness):

- Use Skin Barrier wipes before putting on your adhesive.
- Change your adhesive regularly.
- **DO NOT** remove the adhesive without Adhesive Remover (Standard and Stability) or water (Sensitive and Night).

Use this link to informative CareTips videos for more tips and information about using adhesives:

<https://www.atosmedical.us/resources/caretips>

or scan this QR code:



## Guide to Provox Life Adhesives

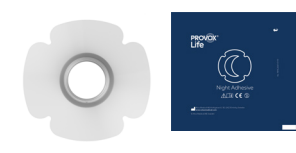
### Provox Life Sensitive Adhesive

Sensitive adhesive is a skin-friendly adhesive for all patients. It provides a good seal.



### Provox Life Night Adhesive

Night adhesive is a soothing and comfortable adhesive for patients with irritated or breached skin.



### Provox Life Standard Adhesive

Standard adhesive is a strong and flexible adhesive for patients with healthy skin.



### Provox Life Stability Adhesive

Stability adhesive provides firm support for patients who speak frequently, have a deep stoma or speak hands-free.



### Provox Cleaning Towel

To clean the skin before putting on an adhesive.

- Cleans and removes oil from the skin
- Alcohol-based and unscented



### Provox Skin Barrier

To leave a protective layer on the skin.

- Alcohol-free
- Use after cleaning the skin and before applying an adhesive
- May help improve adhesive seal



### Provox Adhesive Remover

To help remove adhesive

- Alcohol-free
- Makes removal of adhesive and residue easier



### Provox Silicone Glue

Improves the adhesion between the skin and the adhesive.



### Skin Tac Wipe

Provides a tacky barrier between adhesive and skin.

