

Getting a Good Seal – Provox® Adhesives

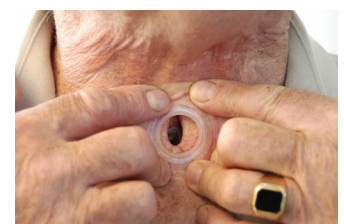
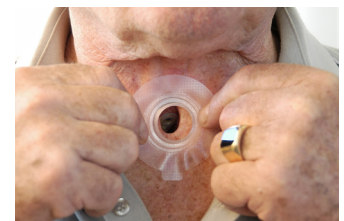
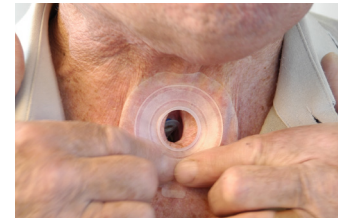
1. Cleaning

- Clean peristomal skin with soap and water and/or Provox Cleaning Towels and dry thoroughly.
- Apply Provox Skin Barrier and wait 1-2 minutes to dry.
- Apply Provox Silicone Glue, if indicated, and wait 4 minutes to dry.
- Align bottom of the inner ring of the adhesive with the bottom lip of the stoma.
- Attach the baseplate/housing so it is in contact with the skin as much as possible.
- Smooth out wrinkles/bubbles by gently moving your fingers around and away from the center of the adhesive - maximizing skin contact and gently removing wrinkles.
- If you can, let the adhesive set for 20 - 30 minutes prior to talking.
- If you are unable to wear the adhesive for 8+ hours, consult your clinician.
- BE PATIENT and PERSISTENT!

2. Troubleshooting

For people who use a voice prosthesis, it is important that air does not escape around the adhesive. The following tips help to extend the duration of the seal:

- Try not to speak too loudly or with too much force.
- Remove the HME from the adhesive when you feel a cough coming on or you begin to cough.
- Hold the adhesive in place with two fingers when removing the HME.
- After you cough, carefully remove any mucus from in between the adhesive and the skin.



3. Removing the adhesive.

Proper skin care is important for your long term success in wearing an adhesive baseplate. It is especially important if you have sensitive skin. The following tips may be helpful:

- Remove the adhesive carefully.
 - For the Provox OptiDerm™ Adhesive, use Provox Adhesive Remover at the edge and then under the adhesive while peeling the adhesive from the skin.
 - For Provox FlexiDerm™, XtraBase® or StabiliBase Adhesives, apply Provox Adhesive Remover on top of the adhesive (the adhesive is porous) and then under the adhesive when peeling the adhesive from the skin.
- Some patients with very sensitive skin can get skin irritation from the use of skin protection products or adhesive removal wipes. If that is the case, discontinue the use of these products and consult your clinician or a dermatologist.



Use a Provox Adhesive Remover wipe on top of a FlexiDerm adhesive to help with removal.